

Load capacity per pair 110lbs  
Max. door width 1000mm [39 3/8"]

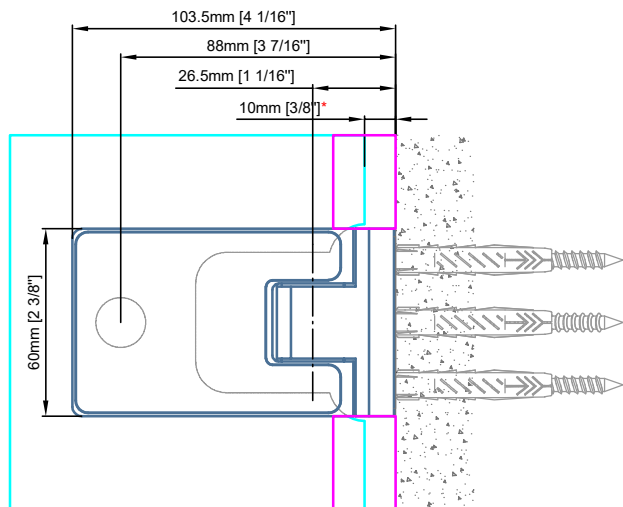
Suitable for 8mm [5/16"] - 10mm [3/8"] - 12mm [1/2"] glass

Reference:

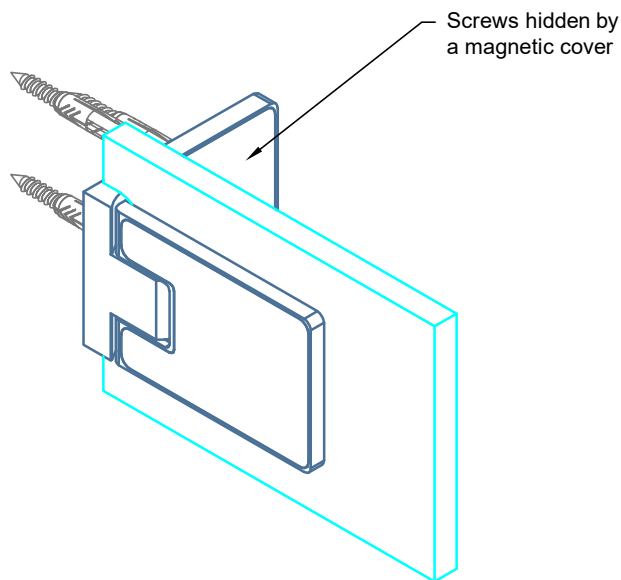
3 hinges required for door height at or above 2600mm [102 3/8"]  
Third hinge positioned in the upper third of door

Copyright MWE NA Inc., all rights reserved. Reproduction or other use of these designs without written consent from MWE NA Inc. is prohibited.

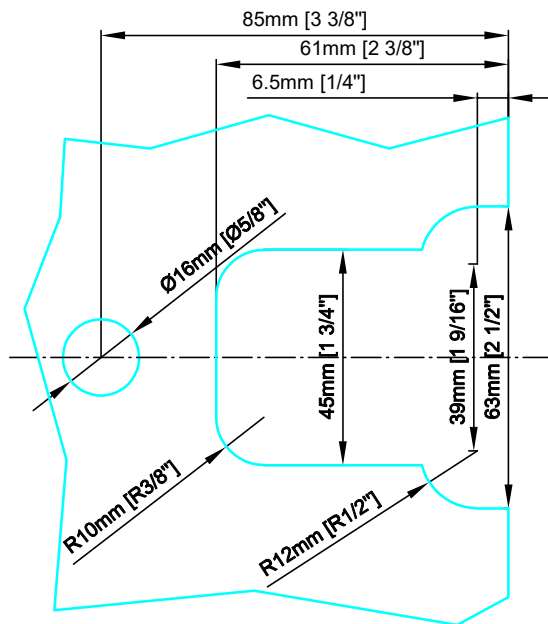
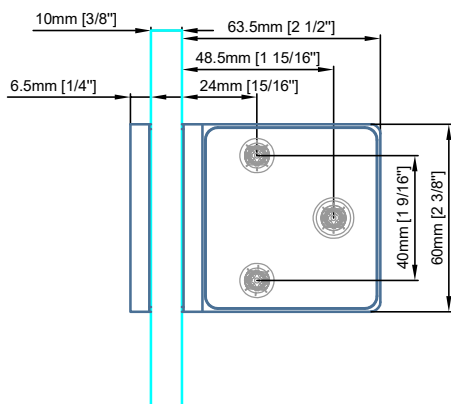
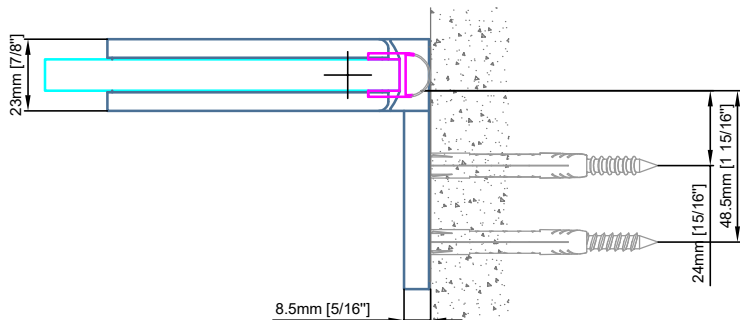
Technical drawings are subject to change without notice.  
All millimeter dimensions are exact and supersede inch conversions.



\* Please refer to the manufacturer's instructions for the seal. This measurement may vary.



\*See specification  
Pivot Hinge [DD.3390 L/R] Glass to Wall - 90°  
for dimension *without seal*



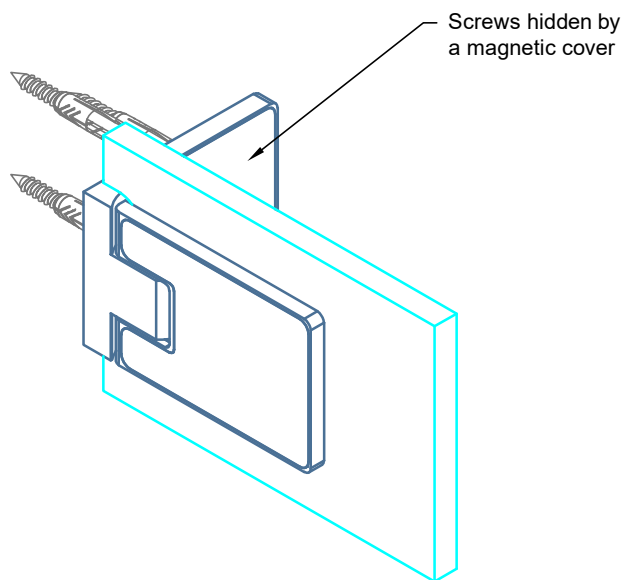
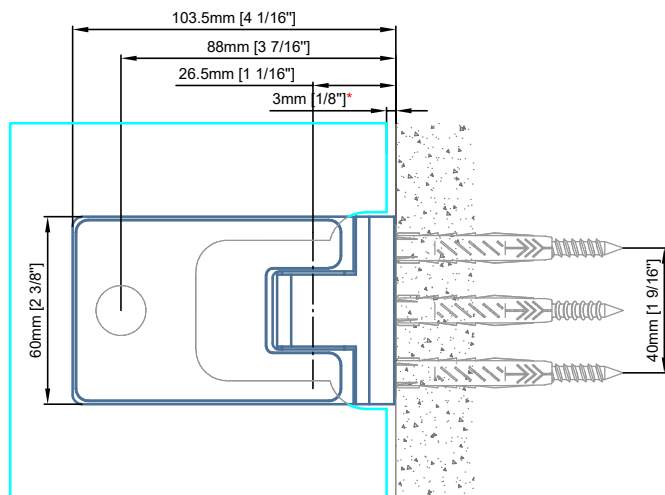
Load capacity per pair 110lbs  
Max. door width 1000mm [39 3/8"]

Suitable for 8mm [5/16"] - 10mm [3/8"] - 12mm [1/2"] glass

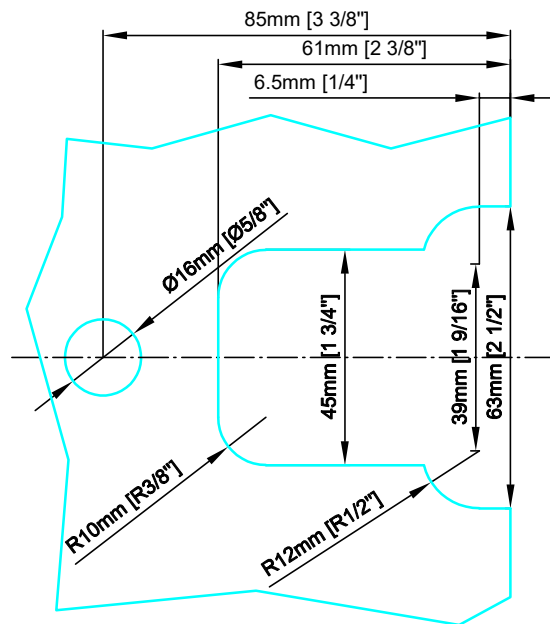
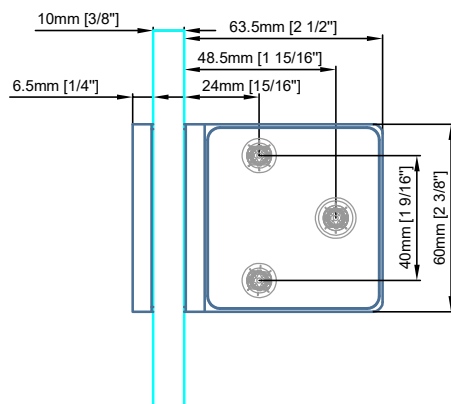
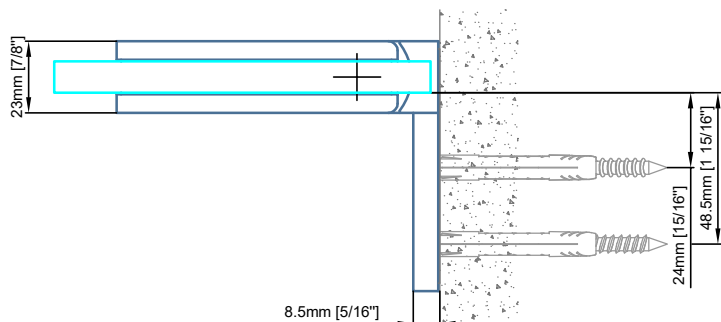
Reference:  
3 hinges required for door height at or above 2600mm [102 3/8"]  
Third hinge positioned in the upper third of door

Copyright MWE NA Inc., all rights reserved. Reproduction or other use of these designs without written consent from MWE NA Inc. is prohibited.

Technical drawings are subject to change without notice.  
All millimeter dimensions are exact and supersede inch conversions.



\*See specification  
Pivot Hinge [DD.3390 L/R] Glass to Wall - 90° with seal



Load capacity per pair 110lbs  
Max. door width 1000mm [39 3/8"]

Suitable for 8mm [5/16"] - 10mm [3/8"] - 12mm [1/2"] glass

Reference:

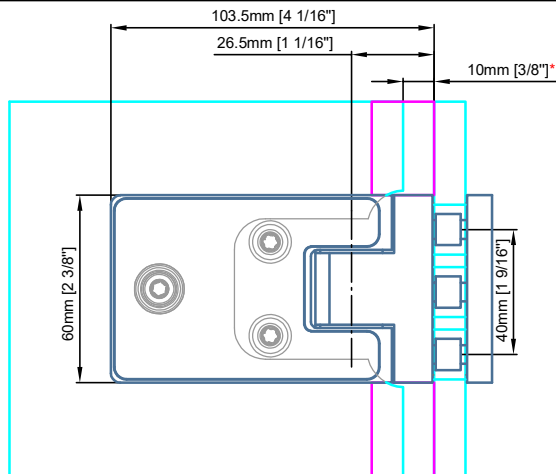
3 hinges required for door height at or above 2600mm [102 3/8"]

Third hinge positioned in the upper third of door

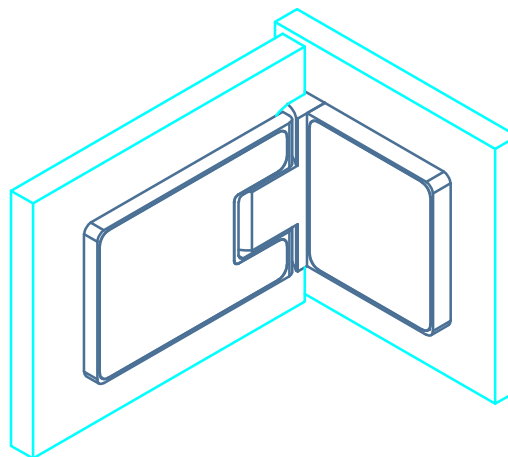
Copyright MWE NA Inc., all rights reserved. Reproduction or other use of these designs without written consent from MWE NA Inc. is prohibited.

Technical drawings are subject to change without notice.

All millimeter dimensions are exact and supersede inch conversions.

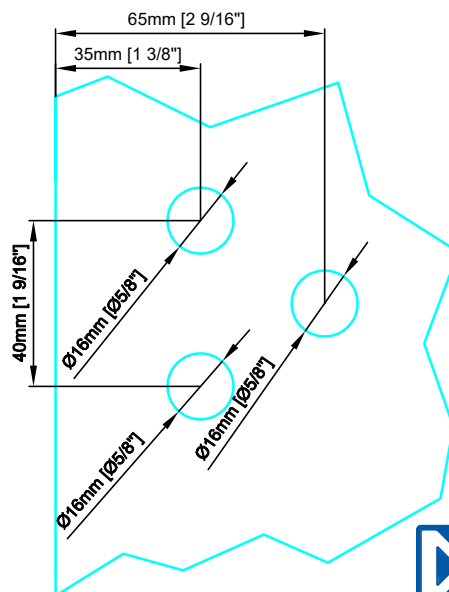
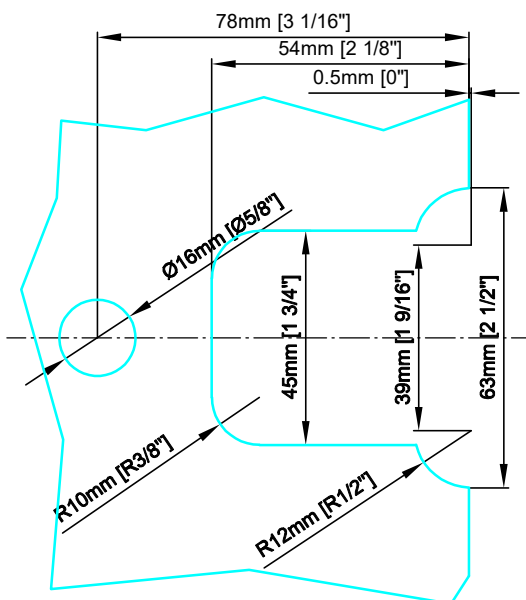
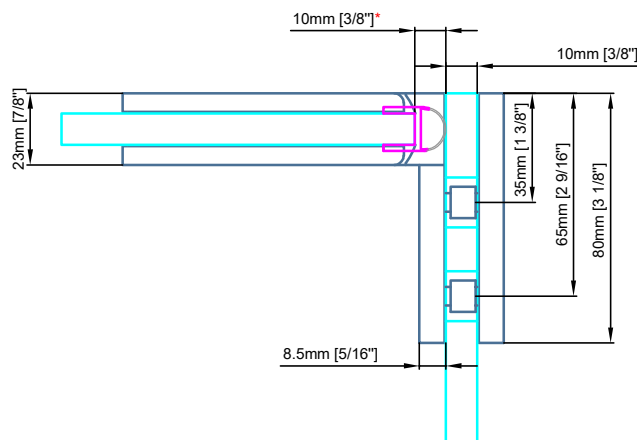
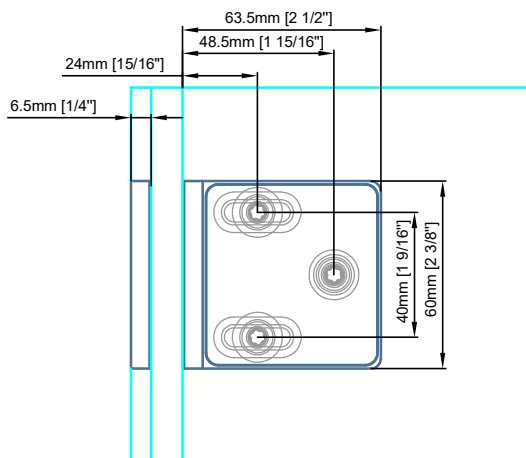


\* Please refer to the manufacturer's instructions for the seal. This measurement may vary.



\*See specification

Pivot Hinge [DD.3391 L/R] Glass to Wall - 90°  
for dimension *without seal*



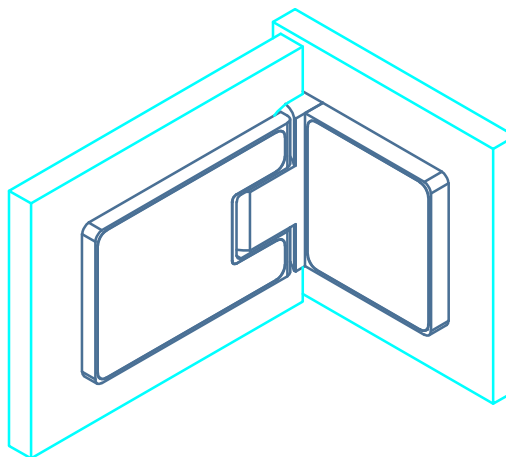
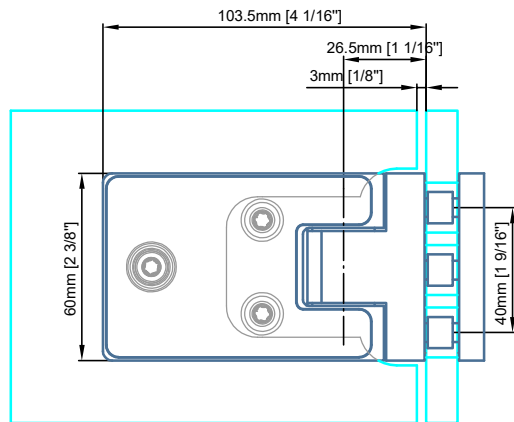
Load capacity per pair 110lbs  
Max. door width 1000mm [39 3/8"]

Suitable for 8mm [5/16"] - 10mm [3/8"] - 12mm [1/2"] glass

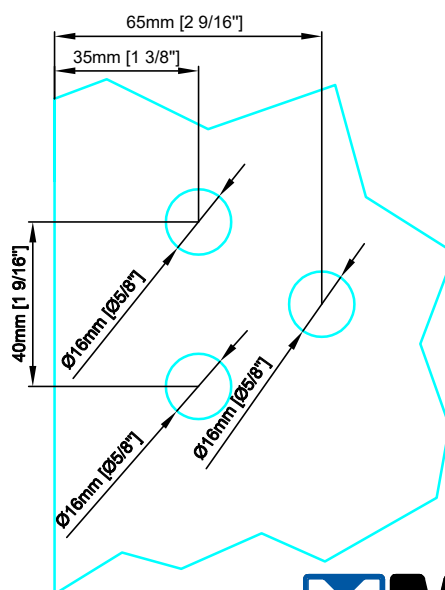
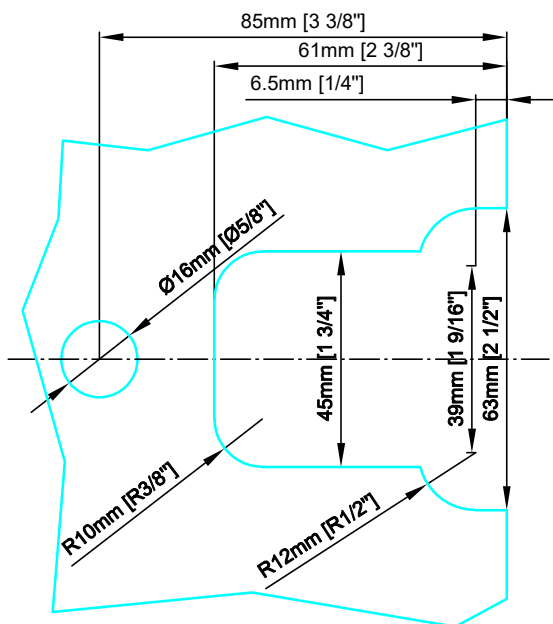
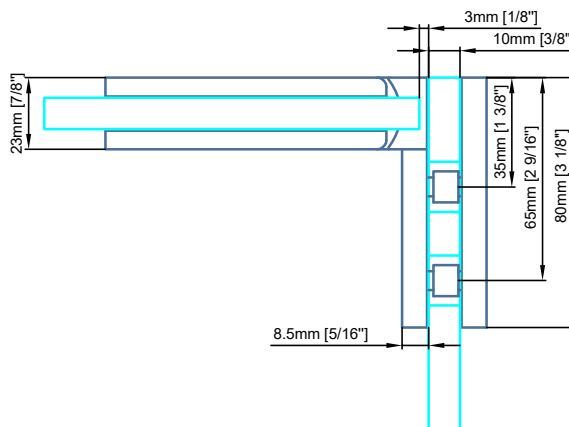
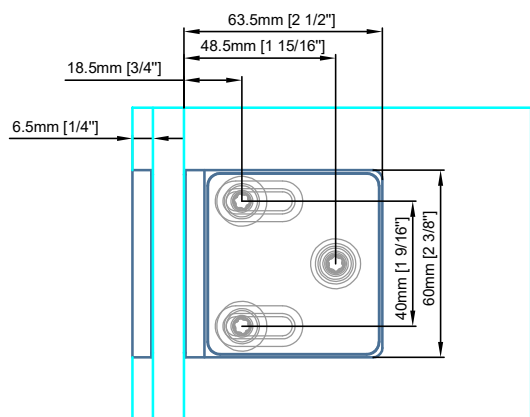
Reference:  
3 hinges required for door height at or above 2600mm [102 3/8"]  
Third hinge positioned in the upper third of door

Copyright MWE NA Inc., all rights reserved. Reproduction or other use of these designs without written consent from MWE NA Inc. is prohibited.

Technical drawings are subject to change without notice.  
All millimeter dimensions are exact and supersede inch conversions.



\*See specification  
Pivot Hinge [DD.3391 L/R] Glass to Wall - 90° *with seal*



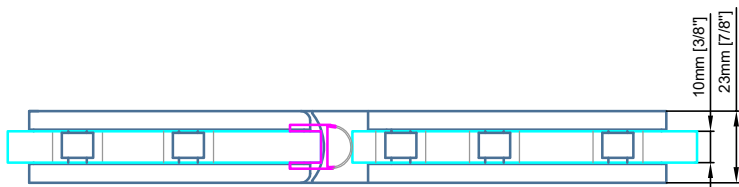
Load capacity per pair 110lbs  
Max. door width 1000mm [39 3/8"]

Suitable for 8mm [5/16"] - 10mm [3/8"] - 12mm [1/2"] glass

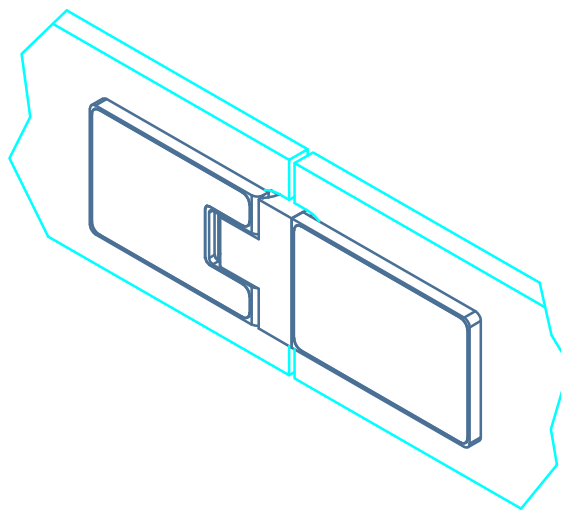
Reference:  
3 hinges required for door height at or above 2600mm [102 3/8"]  
Third hinge positioned in the upper third of door

Copyright MWE NA Inc., all rights reserved. Reproduction or other use of these designs without written consent from MWE NA Inc. is prohibited.

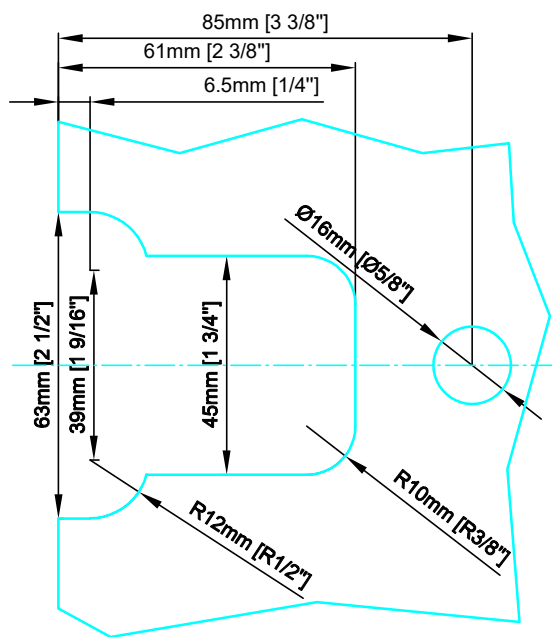
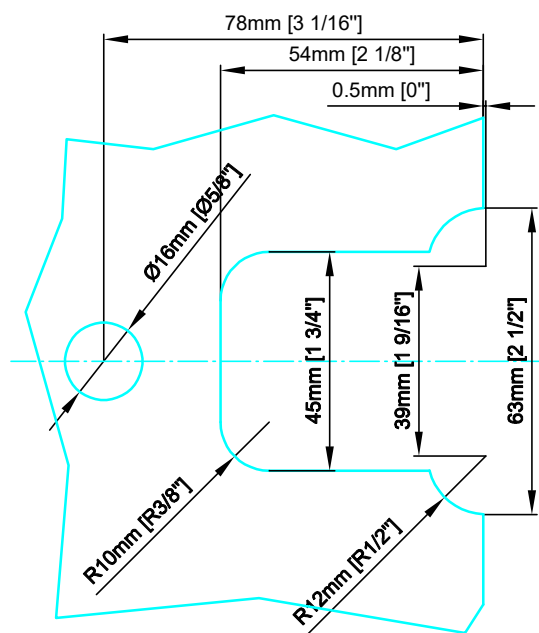
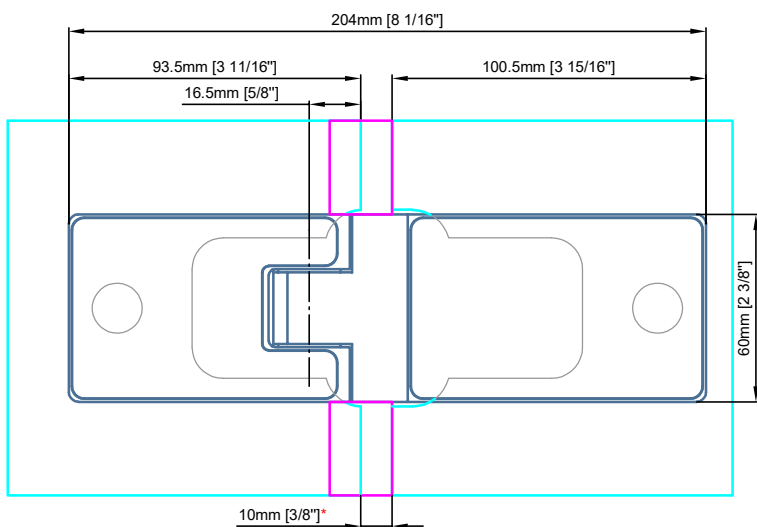
Technical drawings are subject to change without notice.  
All millimeter dimensions are exact and supersede inch conversions.



\* Please refer to the manufacturer's instructions for the seal. This measurement may vary.



\*See specification  
Pivot Hinge [DD.3392 L/R] Glass to Glass - 180°  
for dimension *without seal*



Load capacity per pair 110lbs  
Max. door width 1000mm [39 3/8"]

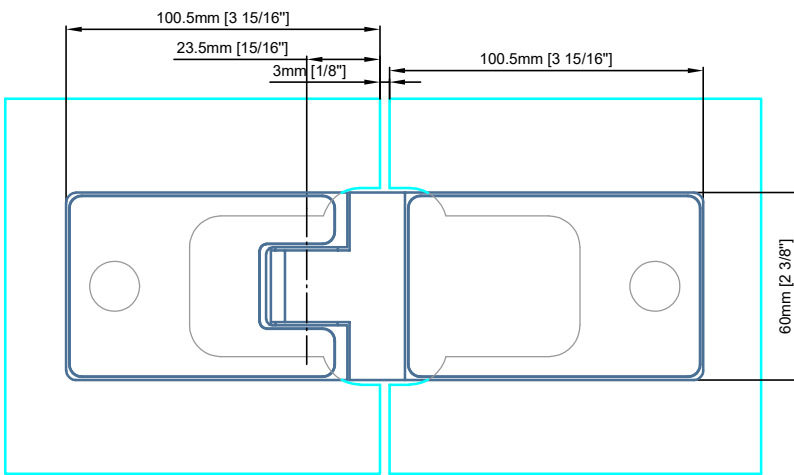
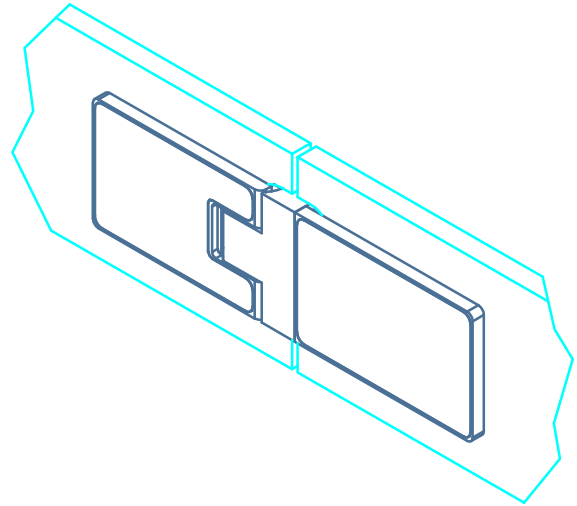
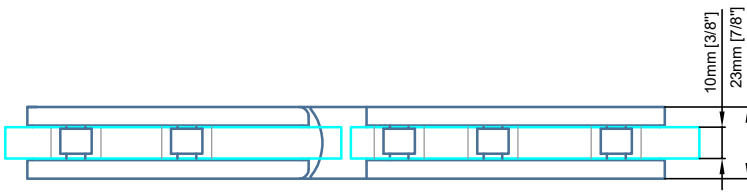
Suitable for 8mm [5/16"] - 10mm [3/8"] - 12mm [1/2"] glass

Reference:

3 hinges required for door height at or above 2600mm [102 3/8"]  
Third hinge positioned in the upper third of door

Copyright MWE NA Inc., all rights reserved. Reproduction or other use of these designs without written consent from MWE NA Inc. is prohibited.

Technical drawings are subject to change without notice.  
All millimeter dimensions are exact and supersede inch conversions.



\*See specification

Pivot Hinge [DD.3392 L/R] Glass to Glass - 180° with seal

