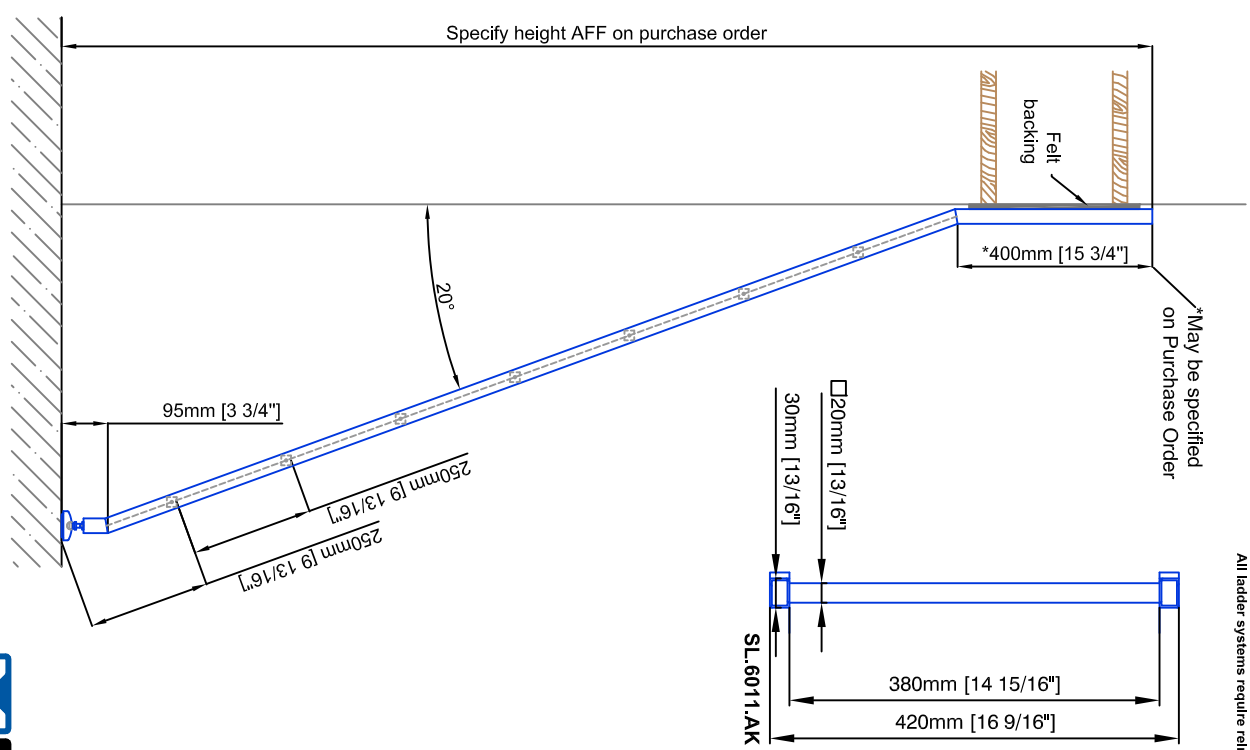
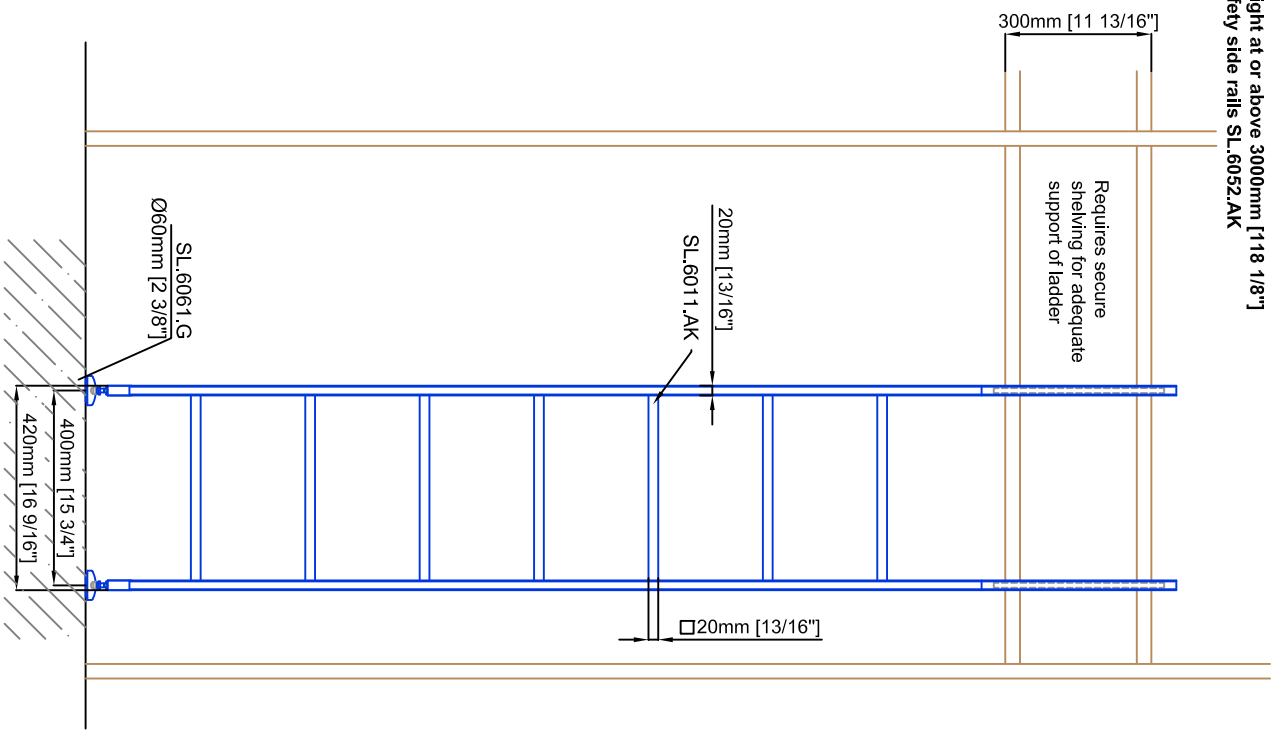


Technical drawings are subject to change without notice. All millimeter dimensions are exact and supersede inch conversions.

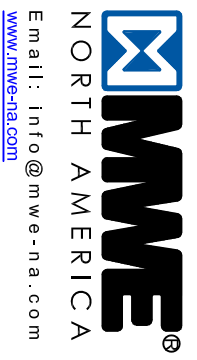
Ladder height at or above 3000mm [118 1/8"] require safety side rails SL.6052.AK



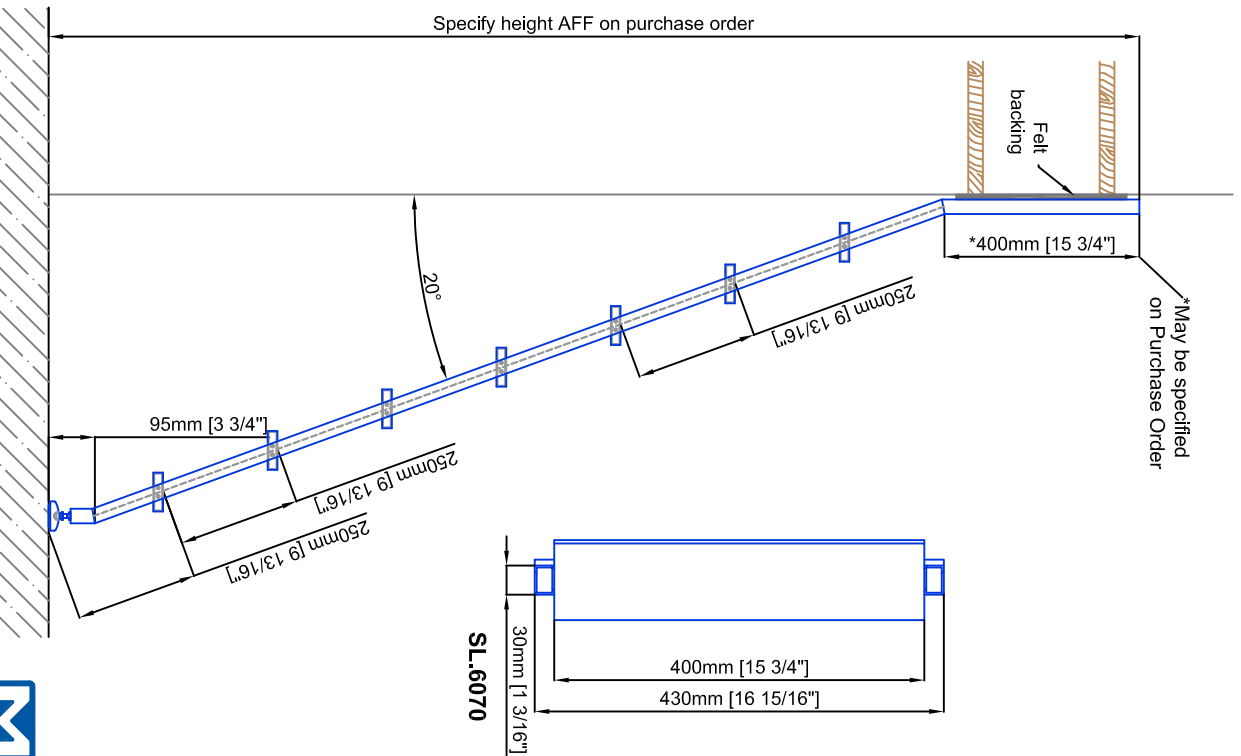
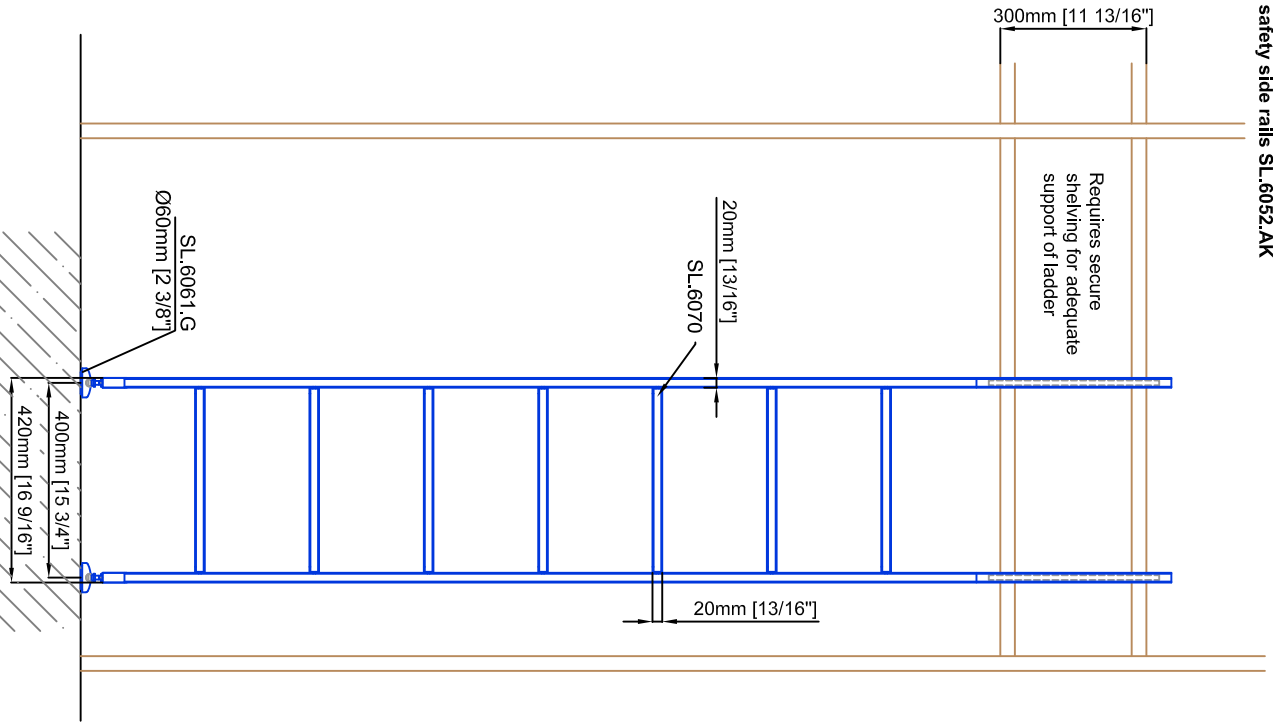
Copyright MWE NA Inc., all rights reserved. Reproduction or other use of these designs without written consent from MWE NA Inc. is prohibited. All ladder systems require reinforced walls, cabinets, or shelving.

Leaning Ladder SL.6000.AK

Date Prepared: October 2018 Prepared By: CDA | JRT



Technical drawings are subject to change without notice.
 All millimeter dimensions are exact and supersede inch conversions.
Ladder height at or above 3000mm [118 1/8"]
require safety side rails SL.6052.AK



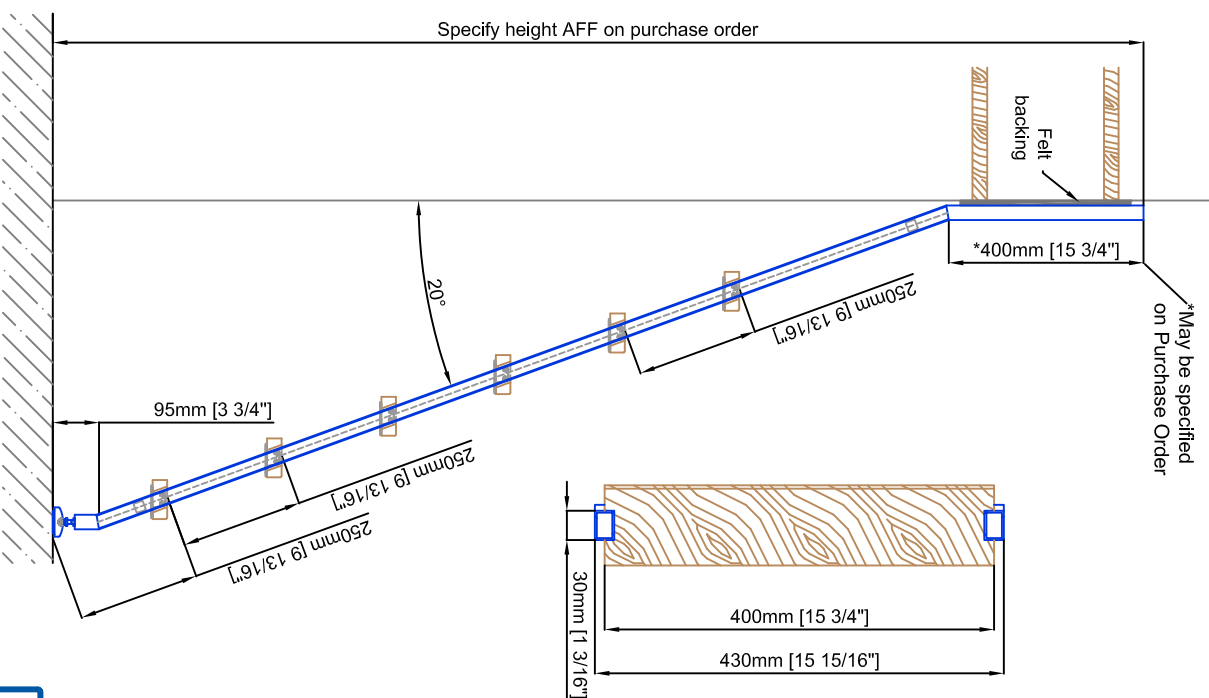
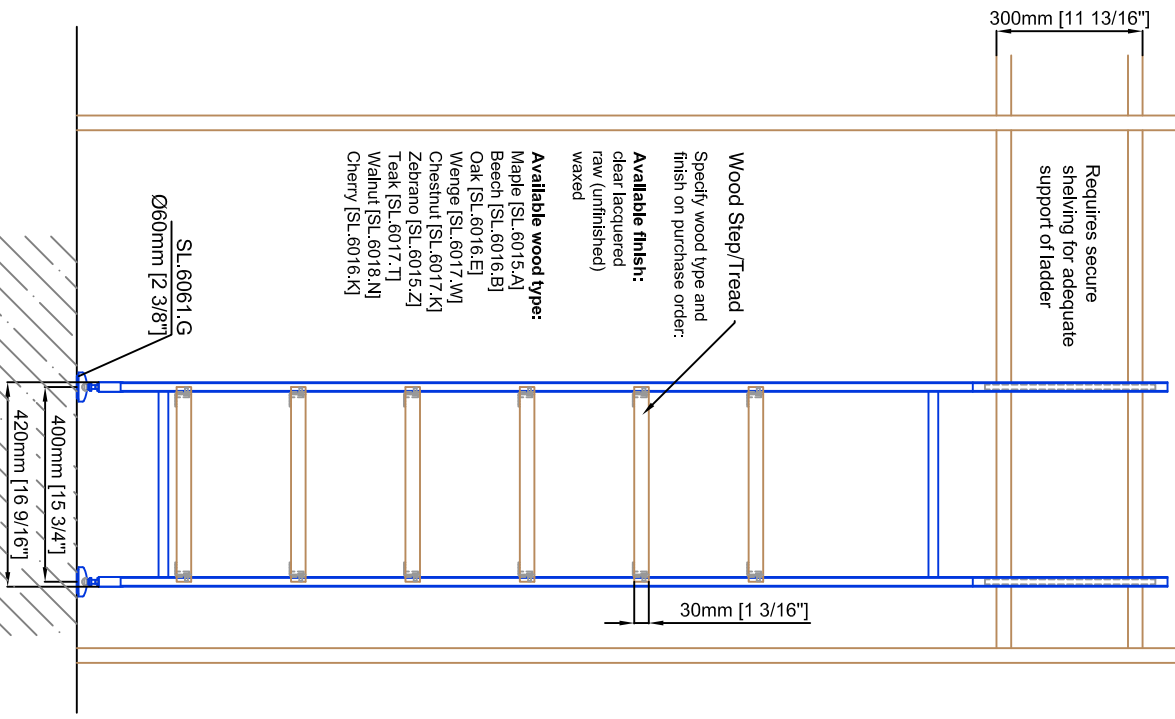
Copyright MWE NA Inc., all rights reserved. Reproduction or other use of these designs without written consent from MWE NA Inc. is prohibited.
 All ladder systems require reinforced walls, cabinets, or shelving.

Leaning Ladder SL.6000.AK.E

Date Prepared: October 2018

Prepared By: CDA | JRT

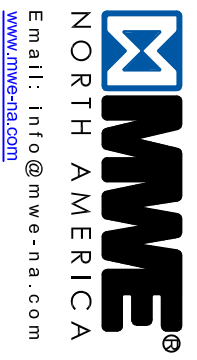
Technical drawings are subject to change without notice.
 All millimeter dimensions are exact and supersede inch conversions.
Ladder height at or above 3000mm [118 1/8"]
Require safety side rails SL.6052.AK



Copyright MWE NA Inc., all rights reserved. Reproduction or other use of these designs without written consent from MWE NA Inc. is prohibited.
 All ladder systems require reinforced walls, cabinets, or shelving.

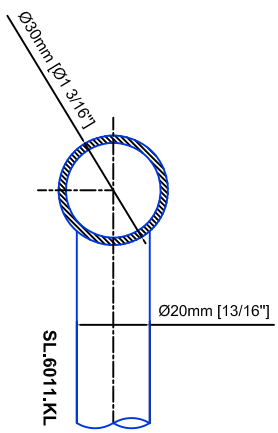
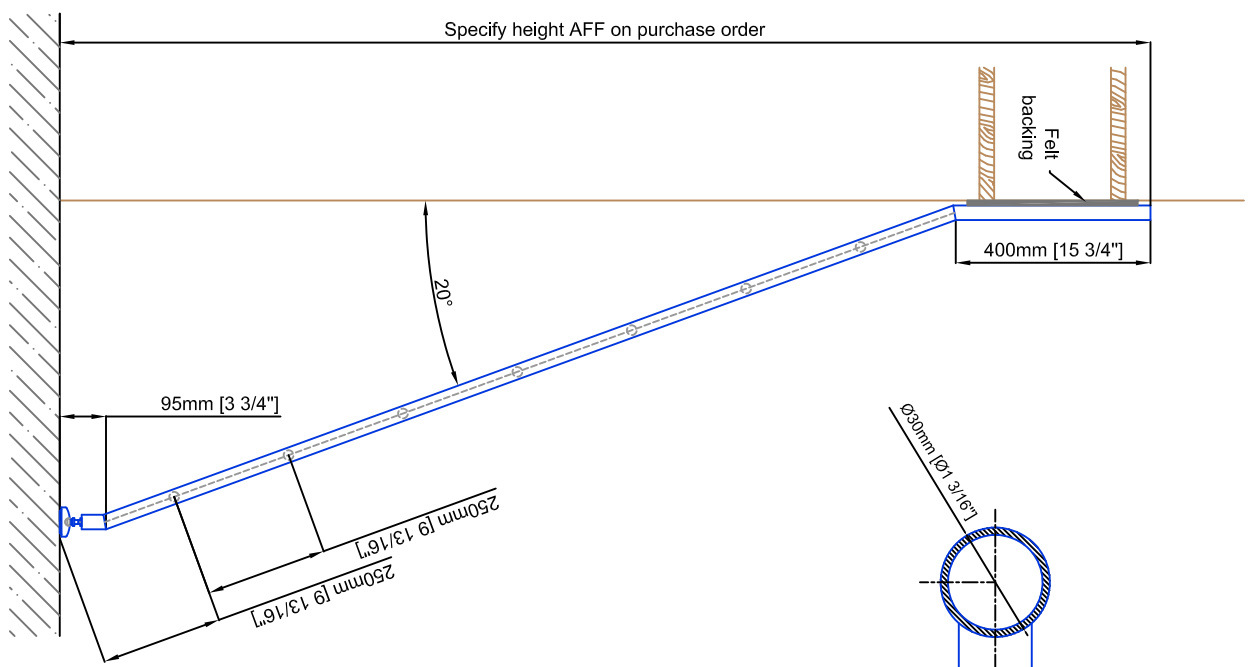
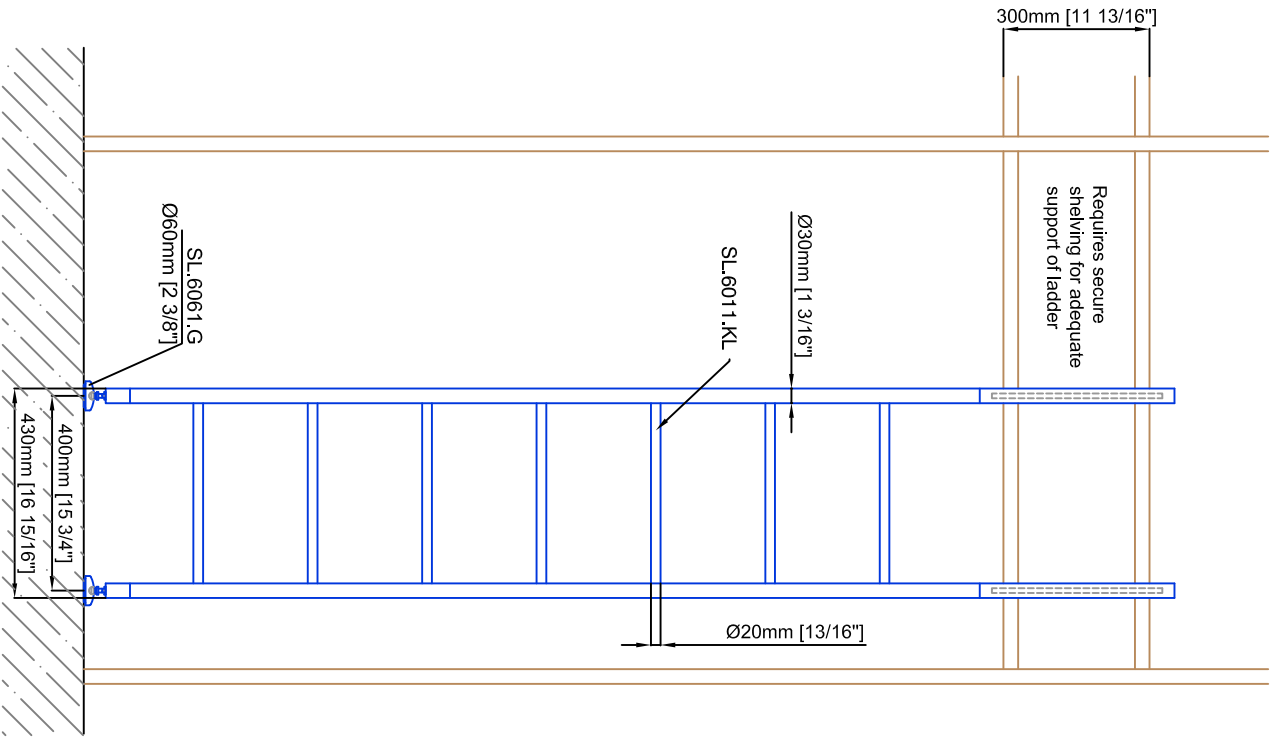
Leaning Ladder SL.6000.AK.H

Date Prepared: October 2018 | Prepared By: CDA | JRT



Technical drawings are subject to change without notice.
 All millimeter dimensions are exact and supersede inch conversions.
Ladder height at or above 3000mm [118 1/8"]
require safety side rails SL.6052.KL

Copyright MWE NA Inc., all rights reserved. Reproduction or other use
 of these designs without written consent from MWE NA Inc. is prohibited.
All ladder systems require reinforced walls, cabinets, or shelving.



Leaning Ladder SL.6000.KL

Date Prepared: October 2018 | Prepared By: CDA | JRT

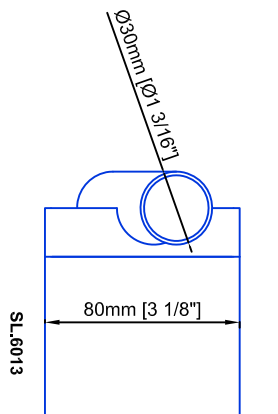
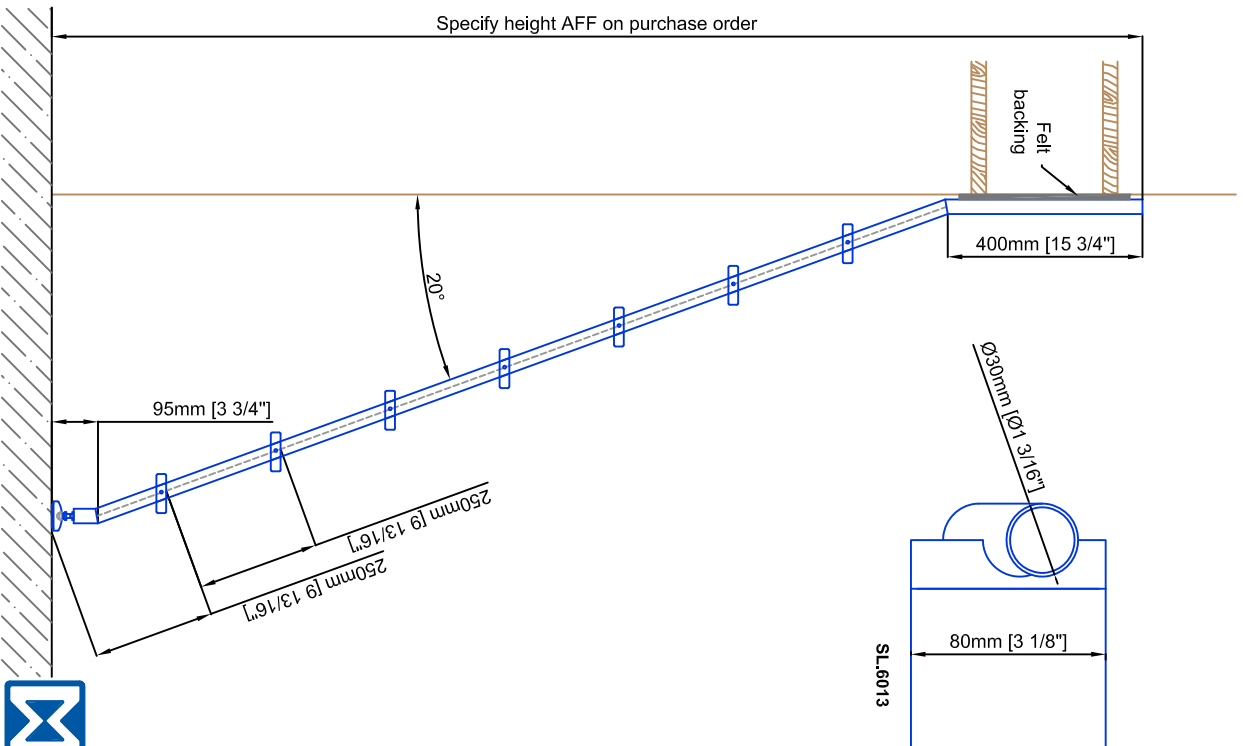
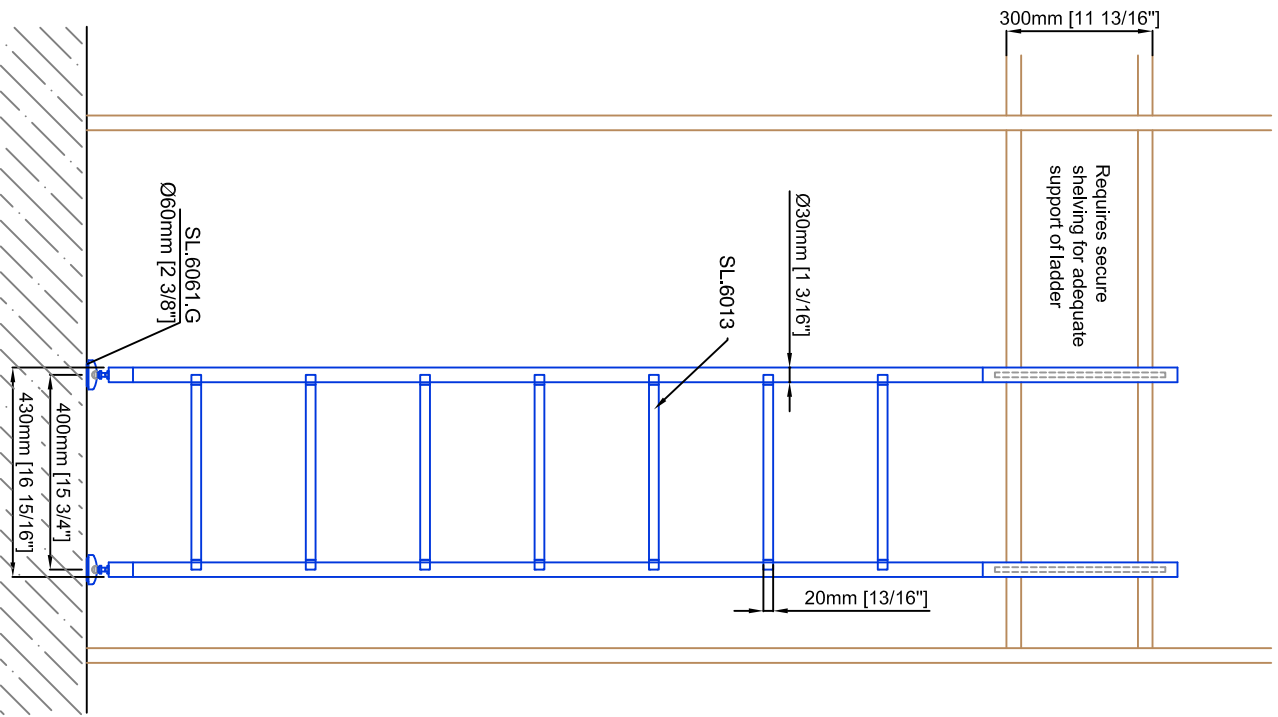


NORTH AMERICA

Email: info@mwe-na.com
www.mwe-na.com

Technical drawings are subject to change without notice.
 All millimeter dimensions are exact and supersede inch conversions.
Ladder height at or above 3000mm [118 1/8"]
require safety side rails SL.6052.KL

Copyright MWE NA Inc., all rights reserved. Reproduction or other use
 of these designs without written consent from MWE NA Inc. is prohibited.
All ladder systems require reinforced walls, cabinets, or shelving.



Leaning Ladder SL.6000.KL.E

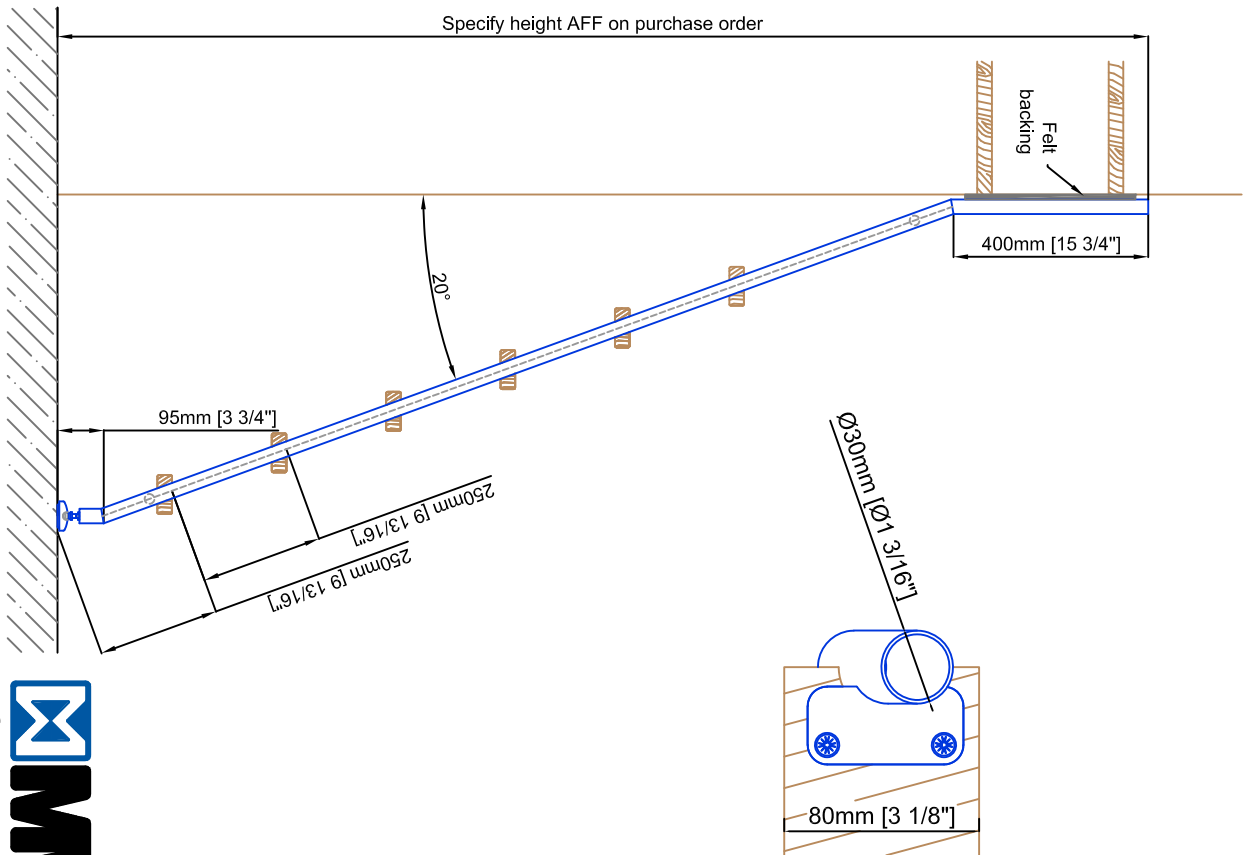
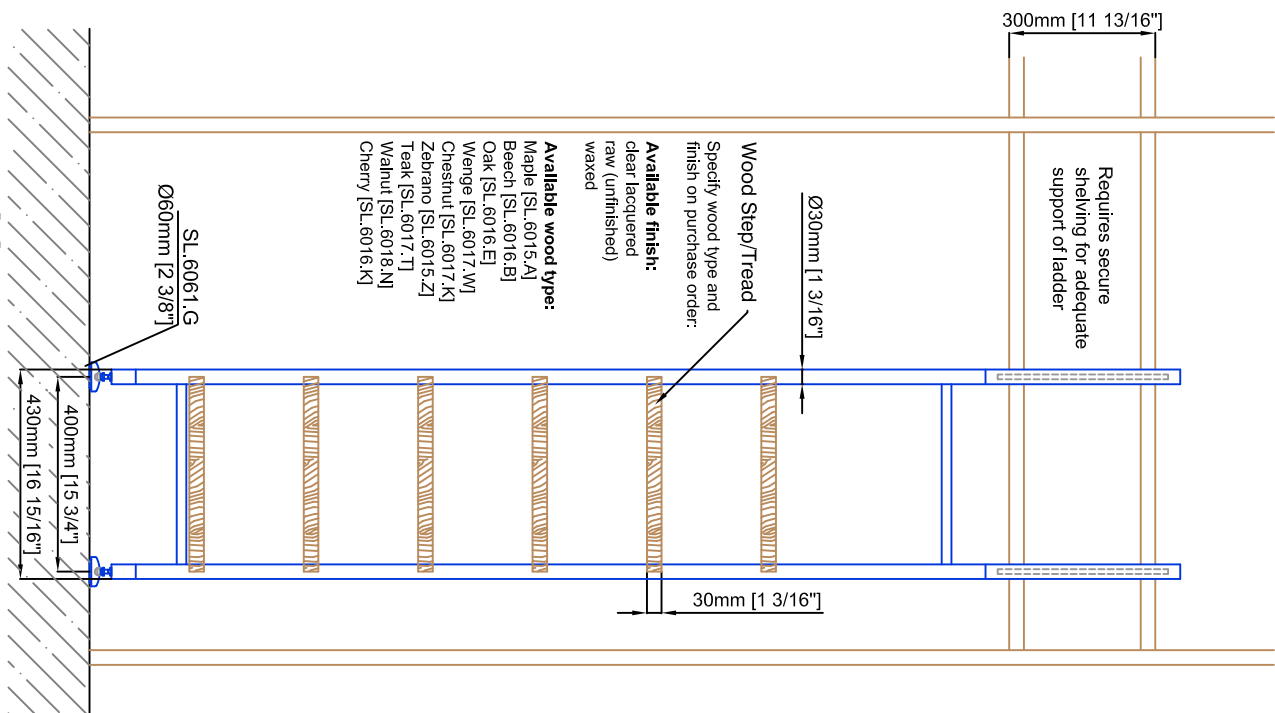
Date Prepared: October 2018

Prepared By: CDA | JRT

Technical drawings are subject to change without notice.
All millimeter dimensions are exact and supersede inch conversions.

Ladder height at or above 3000mm [118 1/8"]
require safety side rails SL.6052.KL

Copyright MWE NA Inc. all rights reserved. Reproduction or other use
of these designs without written consent from MWE NA Inc is prohibited.
All ladder systems require reinforced walls, cabinets, or shelving.



Available wood type:
Maple [SL.6015.A]
Beech [SL.6016.B]
Oak [SL.6016.E]
Wenge [SL.6017.W]
Chestrnut [SL.6017.K]
Zebrawo [SL.6015.Z]
Teak [SL.6017.T]
Walnut [SL.6018.N]
Cherry [SL.6016.K]

Available finish:
clear lacquered
raw (unfinished)
waxed

Wood Step/Tread
Specify wood type and
finish on purchase order:

SL.6061.G
Ø60mm [2 3/8"]

400mm [15 3/4"]
430mm [16 15/16"]

Specify height AFF on purchase order

Felt
backing

400mm [15 3/4"]

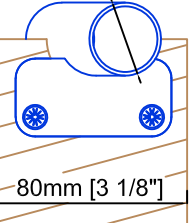
20°

95mm [3 3/4"]

250mm [9 13/16"]

250mm [9 13/16"]

Ø30mm [1 3/16"]



80mm [3 1/8"]

Leaning Ladder SL.6000.KL.H

Date Prepared: October 2018

Prepared By: CDA | JRT