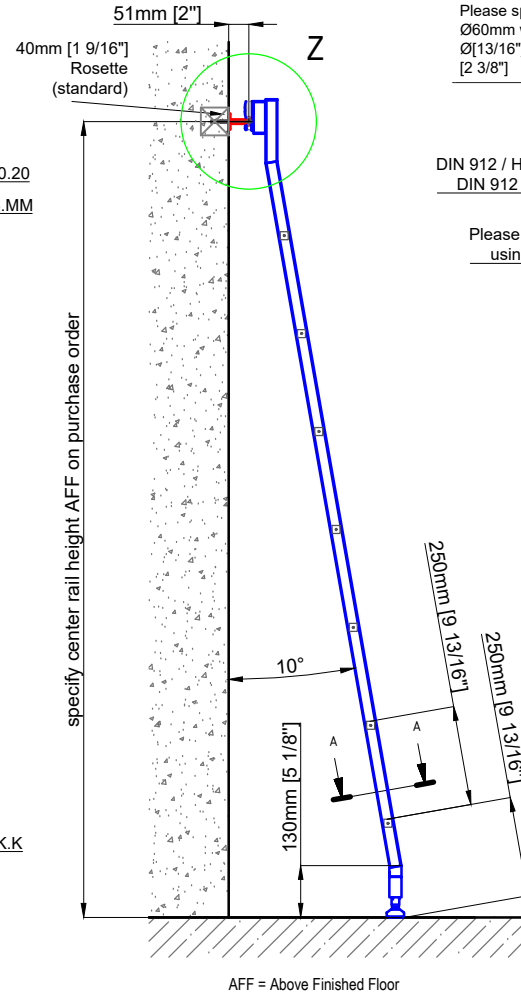
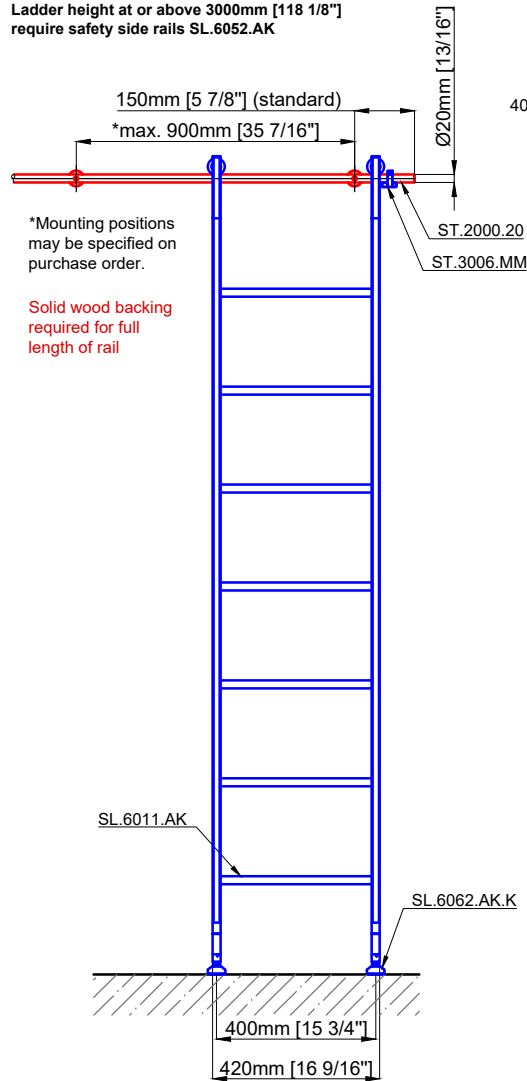


Technical drawings are subject to change without notice.
All millimeter dimensions are exact and supersede inch conversions.

Copyright MWE NA Inc., all rights reserved. Reproduction or other use of these designs without written consent from MWE NA Inc. is prohibited.

Ladder height at or above 3000mm [118 1/8"]
require safety side rails SL.6052.AK



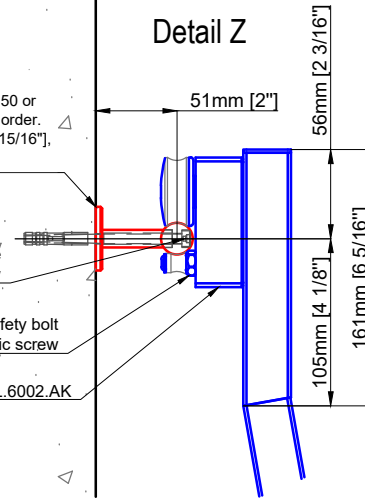
ST.2100.MM
Please specify Ø20,40,50 or
Ø60mm with purchase order.
Ø[13/16"], [1 9/16"], [1 15/16"],
[2 3/8"]

DIN 912 / Holz Schraube
DIN 912 / wood screw

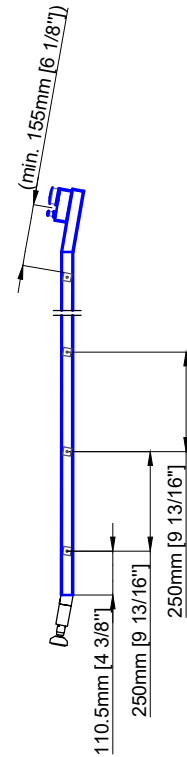
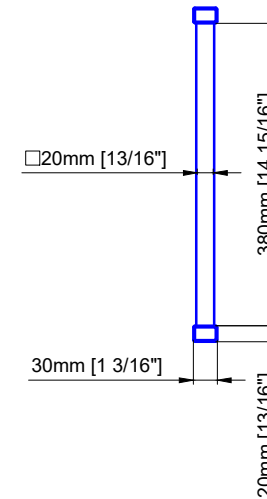
Please adjust the safety bolt
using the eccentric screw

SL.6002.AK

Detail Z



A - A 10°



Sliding Ladder

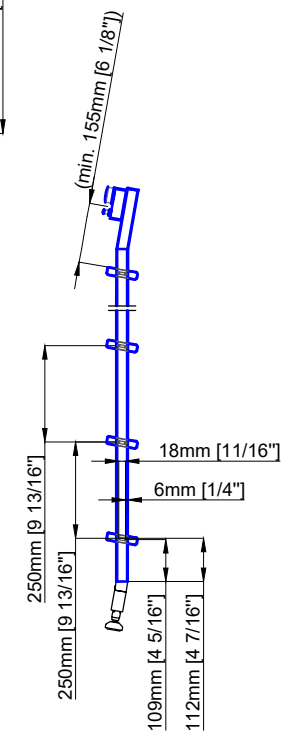
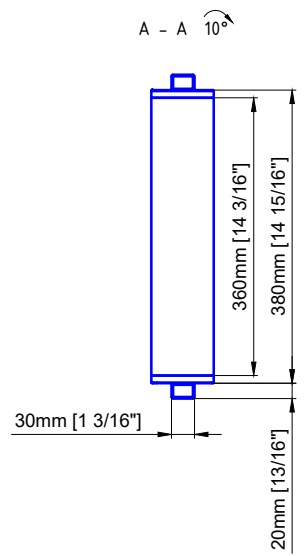
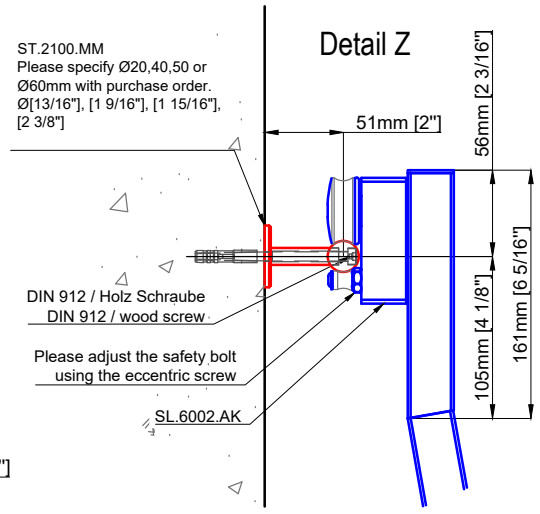
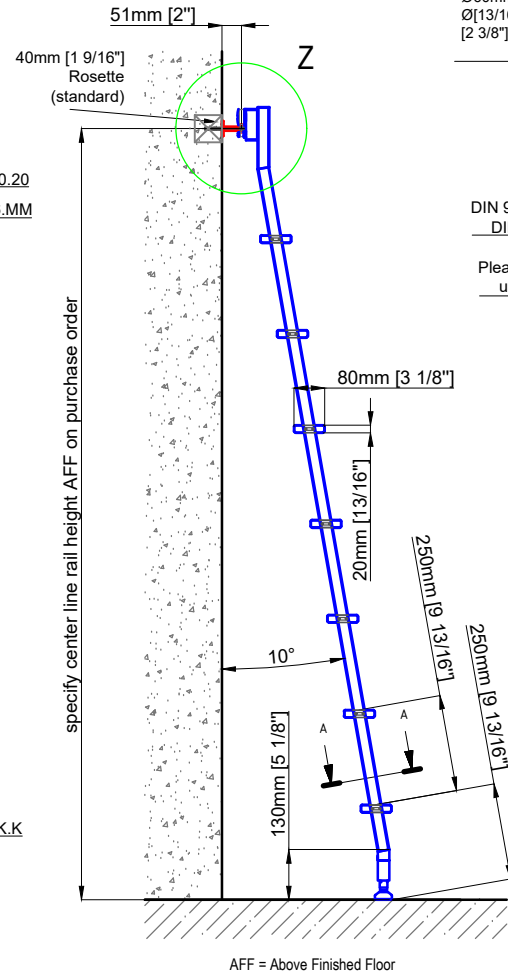
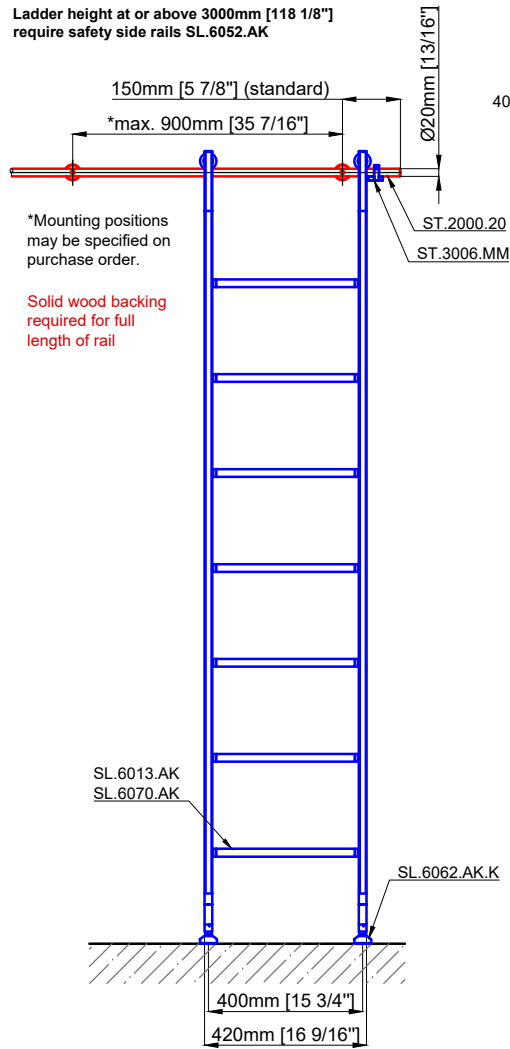
SL.6002.AK

Date Prepared: March 2024

Prepared By: AB

Technical drawings are subject to change without notice.
 All millimeter dimensions are exact and supersede inch conversions.

Copyright MWE NA Inc., all rights reserved. Reproduction or other use of these designs without written consent from MWE NA Inc. is prohibited.



Sliding Ladder

SL.6002.AK.E

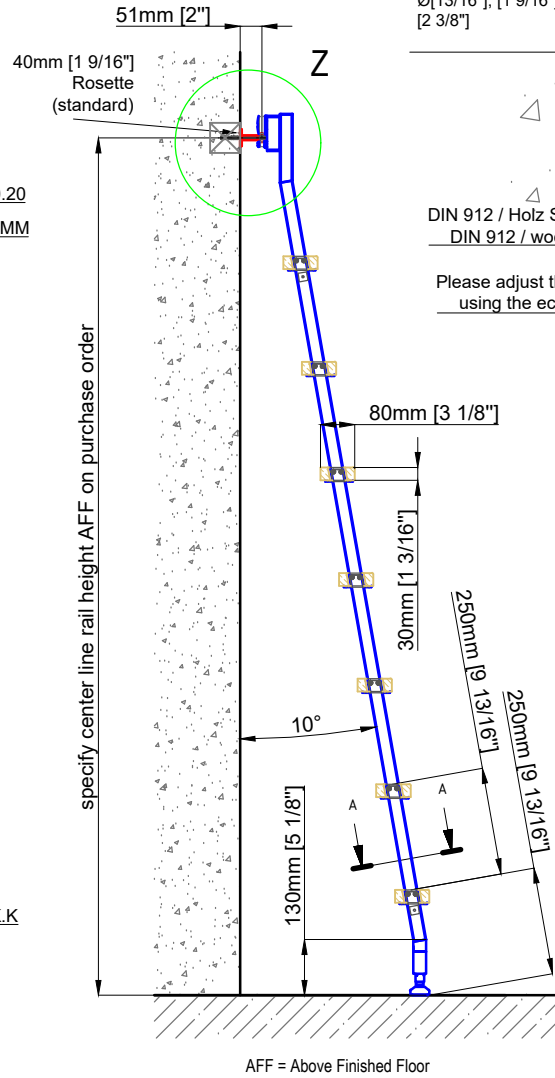
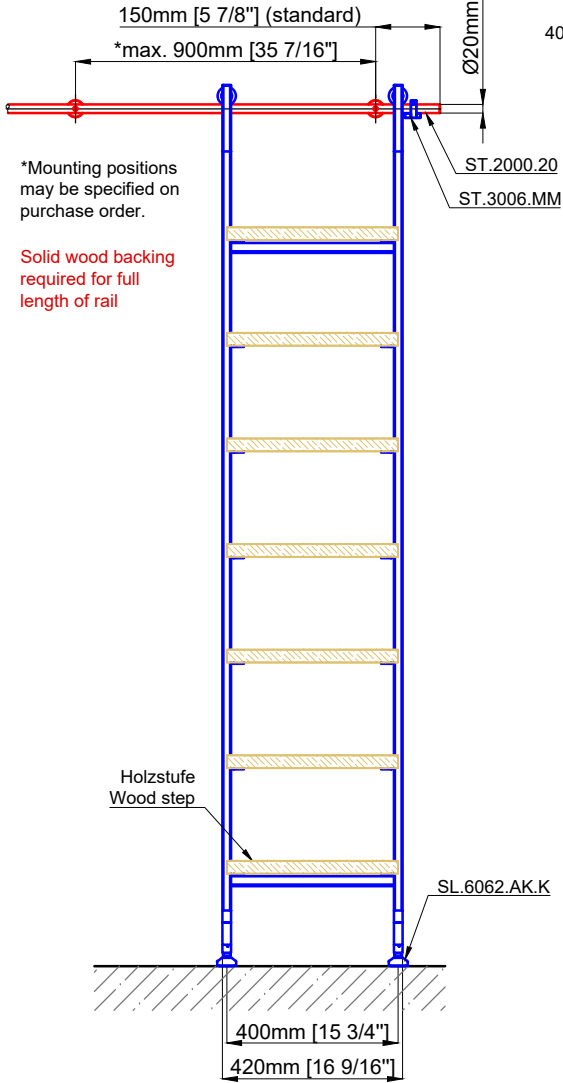
Date Prepared: March 2024

Prepared By: AB

Technical drawings are subject to change without notice.
 All millimeter dimensions are exact and supersede inch conversions.

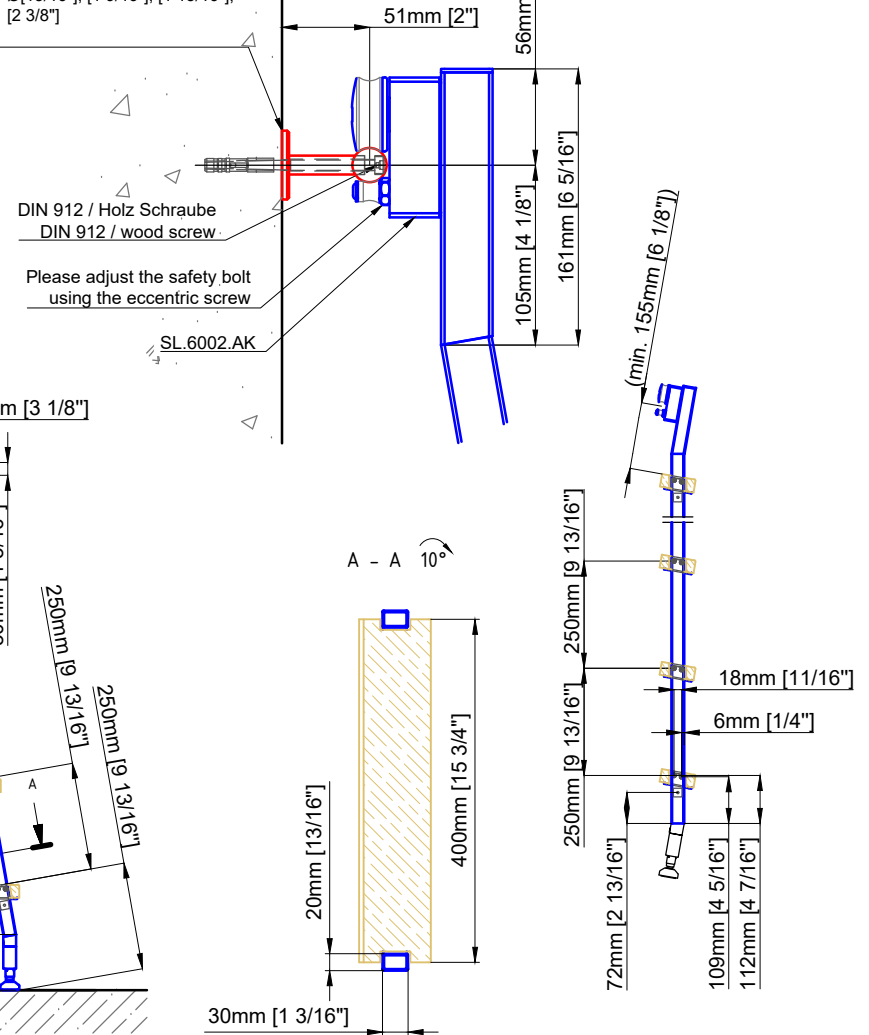
Copyright MWE NA Inc., all rights reserved. Reproduction or other use of these designs without written consent from MWE NA Inc. is prohibited.

Ladder height at or above 3000mm [118 1/8"]
 require safety side rails SL.6052.AK



ST.2100.MM
 Please specify Ø20,40,50 or Ø60mm with purchase order.
 Ø[13/16"], [1 9/16"], [1 15/16"], [2 3/8"]

Detail Z



Sliding Ladder
 SL.6002.AK.H

Date Prepared: March 2024

Prepared By: AB



Stainless Steel Manufacturer
 NORTH AMERICA

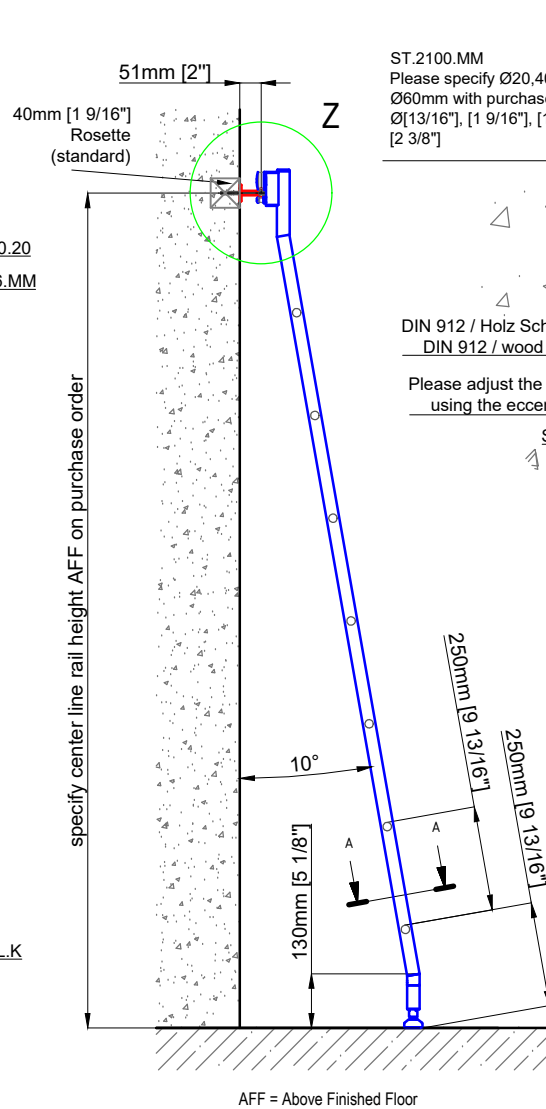
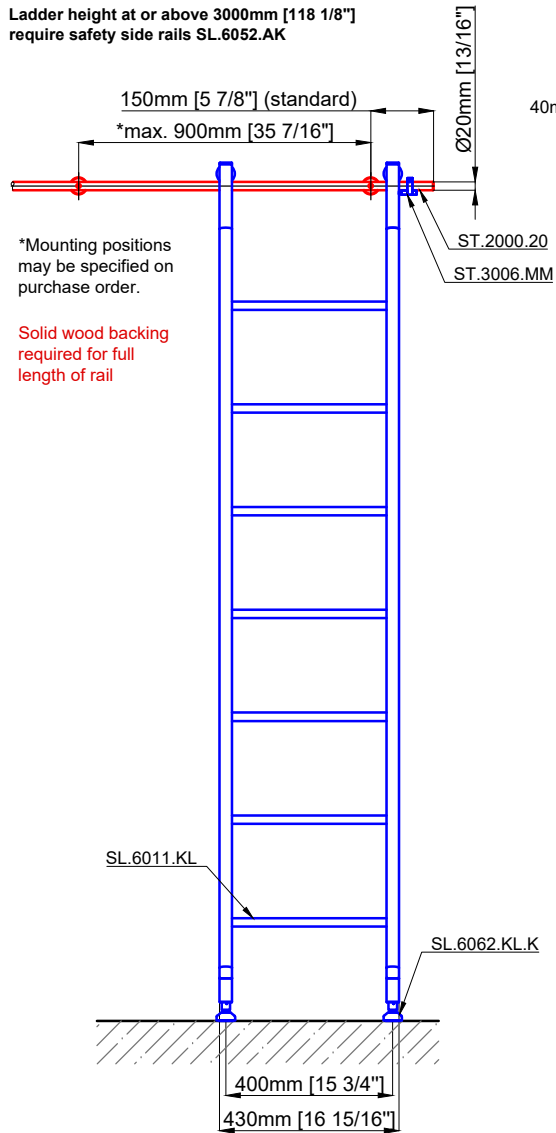
Email: sales@mwe-na.com

www.mwe-na.com

Technical drawings are subject to change without notice.
 All millimeter dimensions are exact and supersede inch conversions.

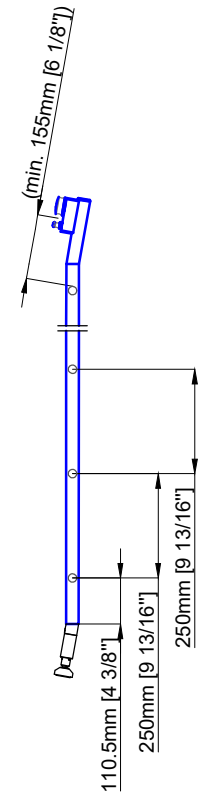
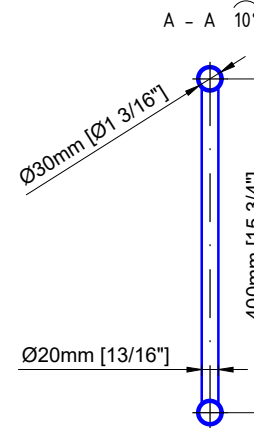
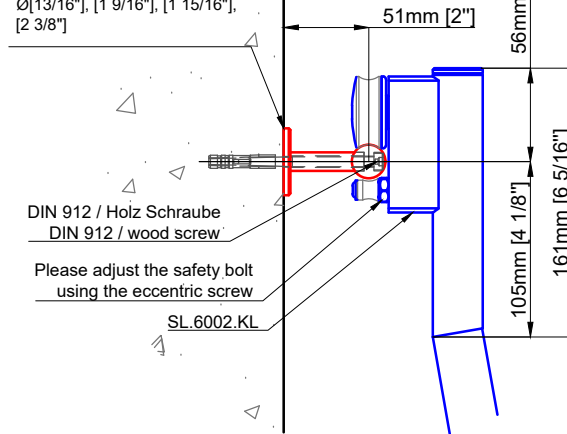
Copyright MWE NA Inc., all rights reserved. Reproduction or other use of these designs
 without written consent from MWE NA Inc. is prohibited.

Ladder height at or above 3000mm [118 1/8"]
 require safety side rails SL.6052.AK



ST.2100.MM
 Please specify Ø20,40,50 or
 Ø60mm with purchase order.
 Ø[13/16"], [1 9/16"], [1 15/16"],
 [2 3/8"]

Detail Z



Sliding Ladder
 SL.6002.KL

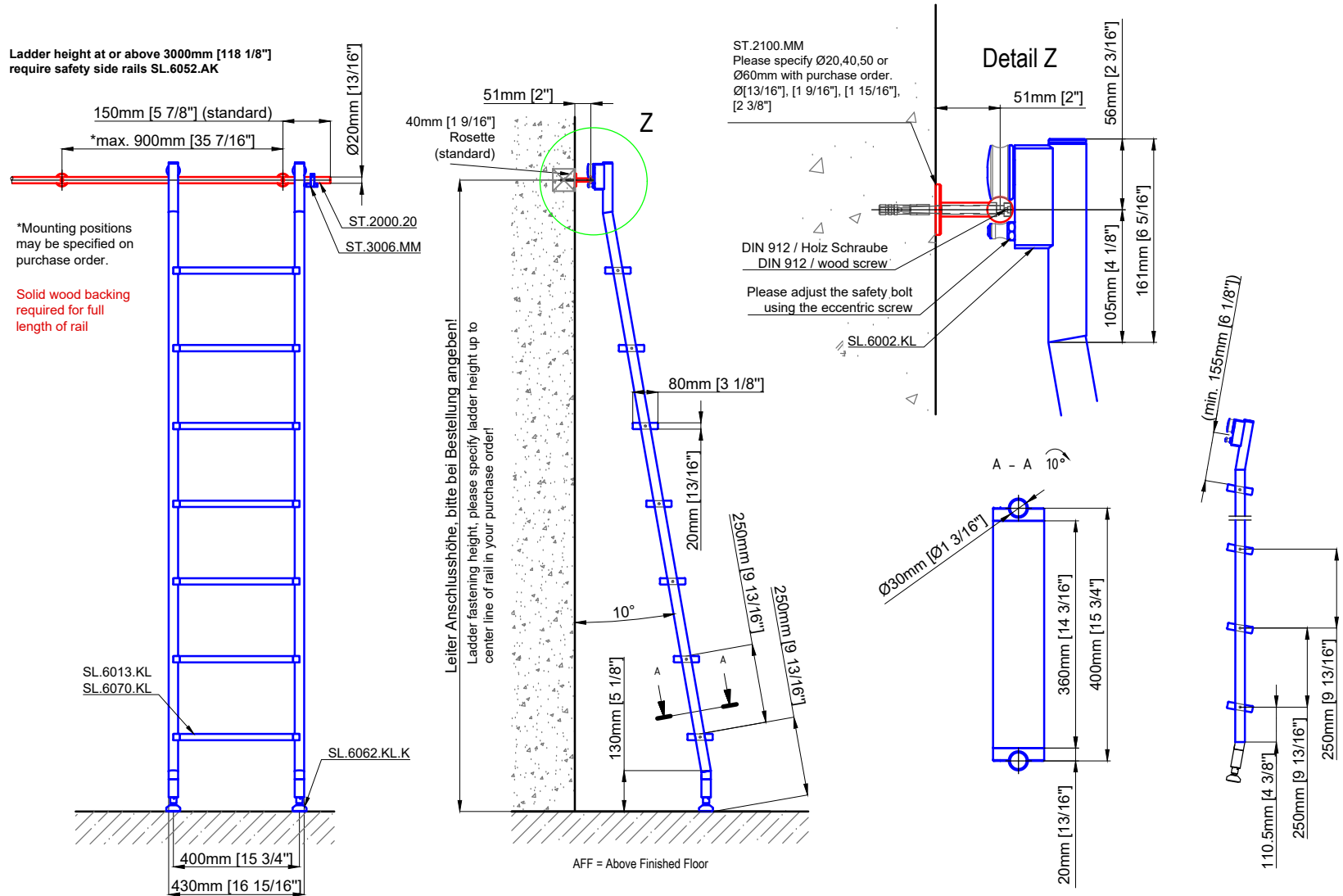
Date Prepared: March 2024

Prepared By: AB

MWE®
 Stainless Steel Manufacturer
 NORTH AMERICA
 Email: sales@mwe-na.com
www.mwe-na.com

Technical drawings are subject to change without notice.
 All millimeter dimensions are exact and supersede inch conversions.

Copyright MWE NA Inc., all rights reserved. Reproduction or other use of these designs without written consent from MWE NA Inc. is prohibited.



Sliding Ladder

SL.6002.KL.E

Date Prepared: March 2024

Prepared By: AB

Technical drawings are subject to change without notice.
 All millimeter dimensions are exact and supersede inch conversions.

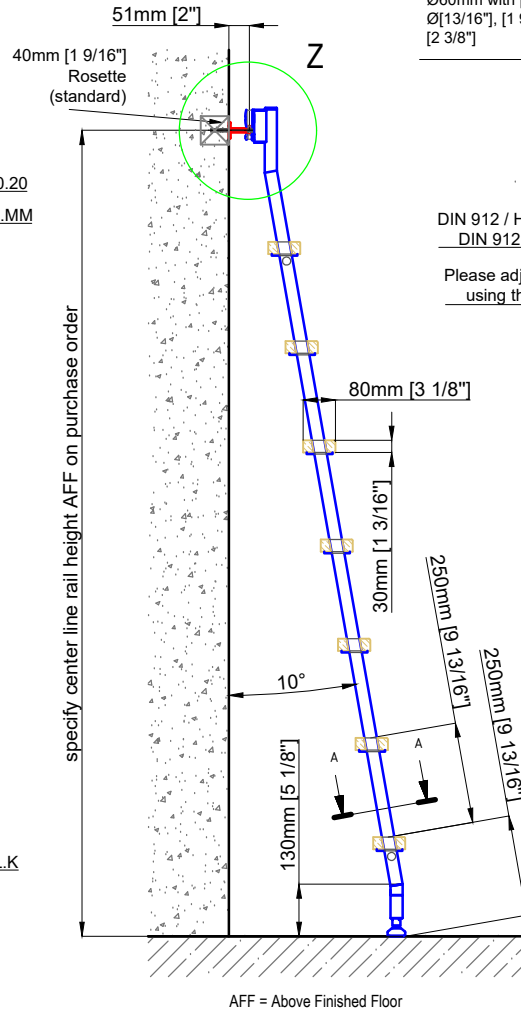
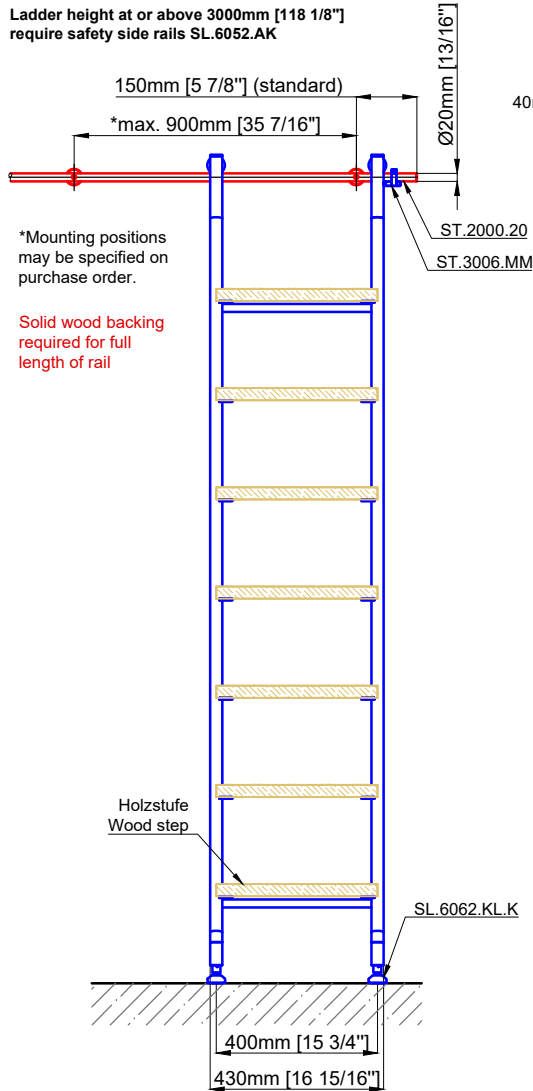
Copyright MWE NA Inc., all rights reserved. Reproduction or other use of these designs without written consent from MWE NA Inc. is prohibited.

Ladder height at or above 3000mm [118 1/8"] require safety side rails SL.6052.AK

150mm [5 7/8"] (standard)
 *max. 900mm [35 7/16"]

*Mounting positions may be specified on purchase order.

Solid wood backing required for full length of rail



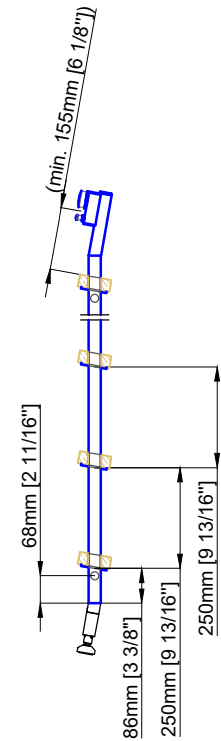
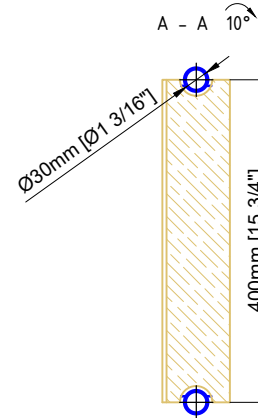
ST.2100.MM
 Please specify Ø20,40,50 or Ø60mm with purchase order.
 Ø[13/16"], [1 9/16"], [1 15/16"], [2 3/8"]

Detail Z

DIN 912 / Holz Schraube
 DIN 912 / wood screw

Please adjust the safety bolt using the eccentric screw

SL.6002.KL



Sliding Ladder

SL.6002.KL.H

Date Prepared: March 2024

Prepared By: AB

MWE[®]
 Stainless Steel Manufacturer
 NORTH AMERICA
 Email: sales@mwe-na.com
www.mwe-na.com