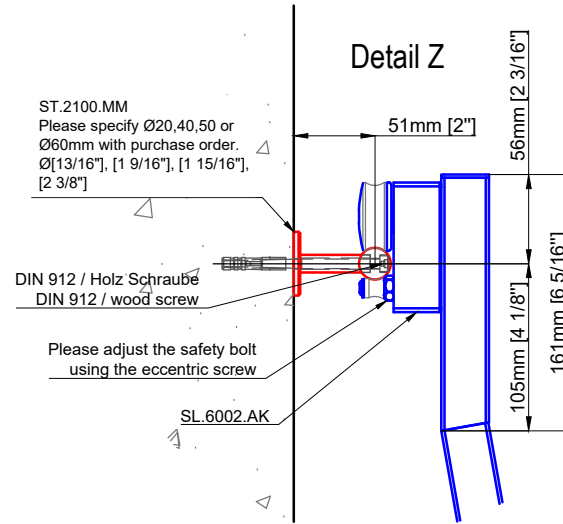
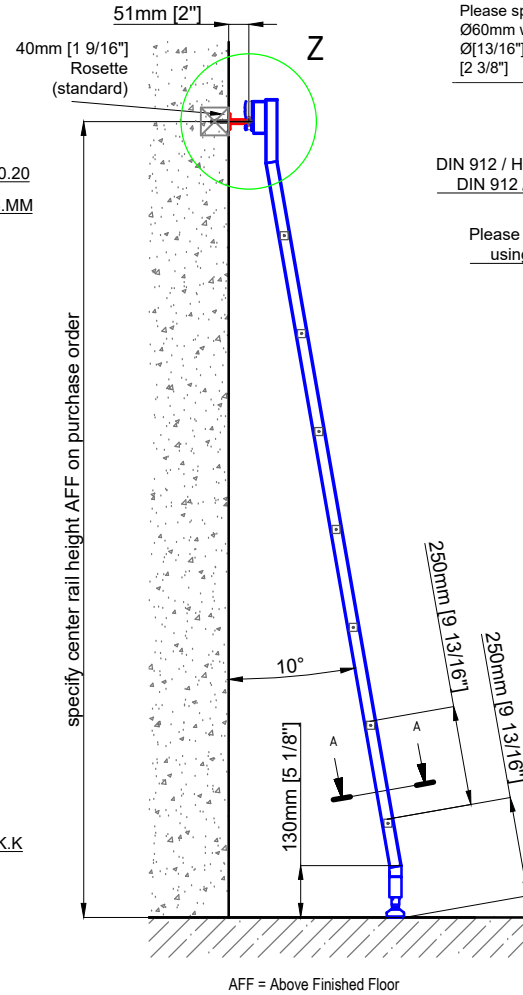
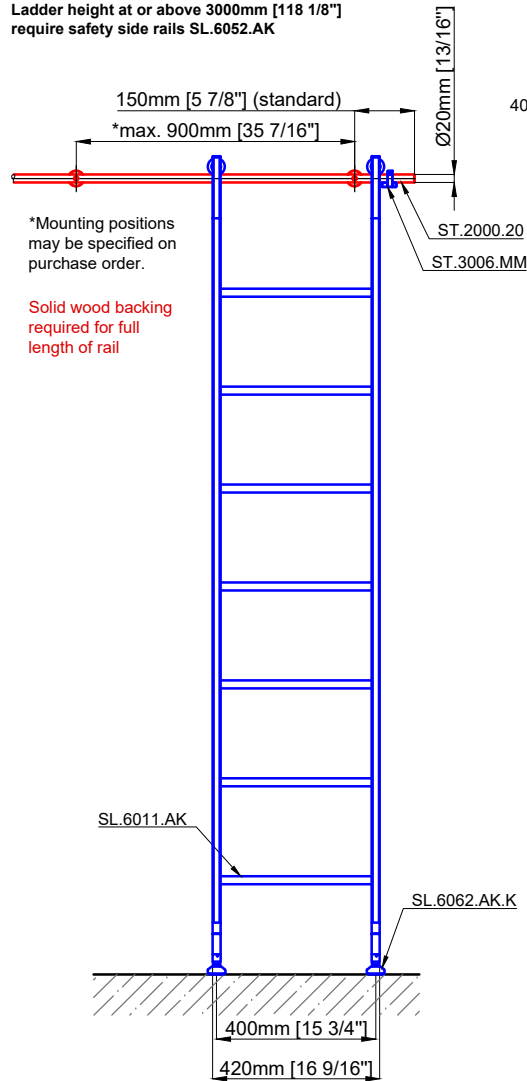


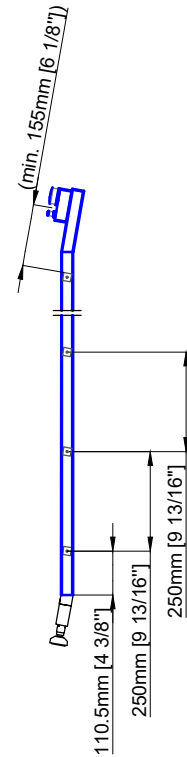
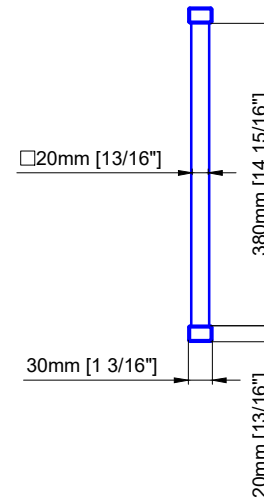
Technical drawings are subject to change without notice.  
 All millimeter dimensions are exact and supersede inch conversions.

Copyright MWE NA Inc., all rights reserved. Reproduction or other use of these designs without written consent from MWE NA Inc. is prohibited.

Ladder height at or above 3000mm [118 1/8"]  
 require safety side rails SL.6052.AK



A - A 10°



# Sliding Ladder

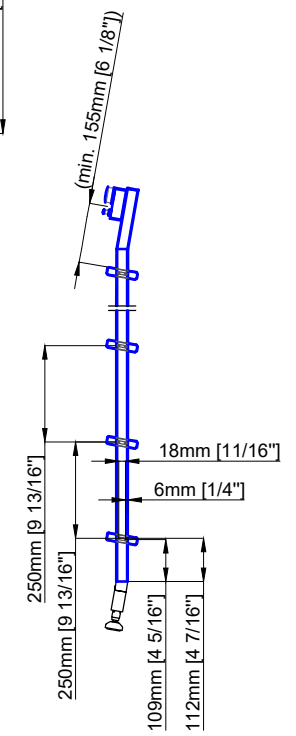
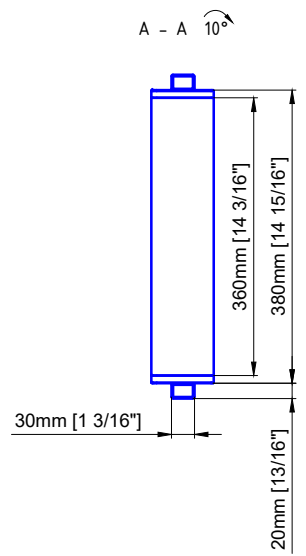
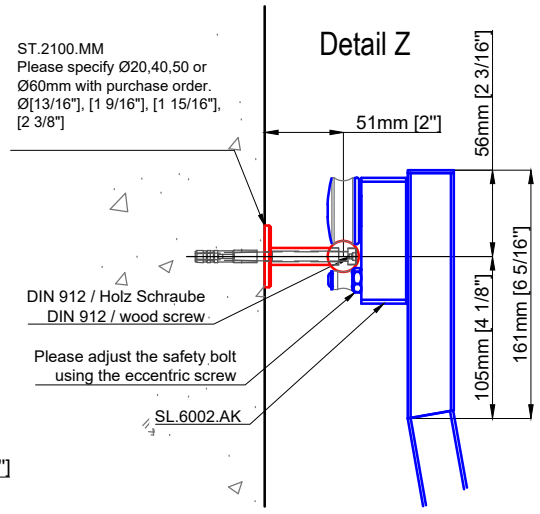
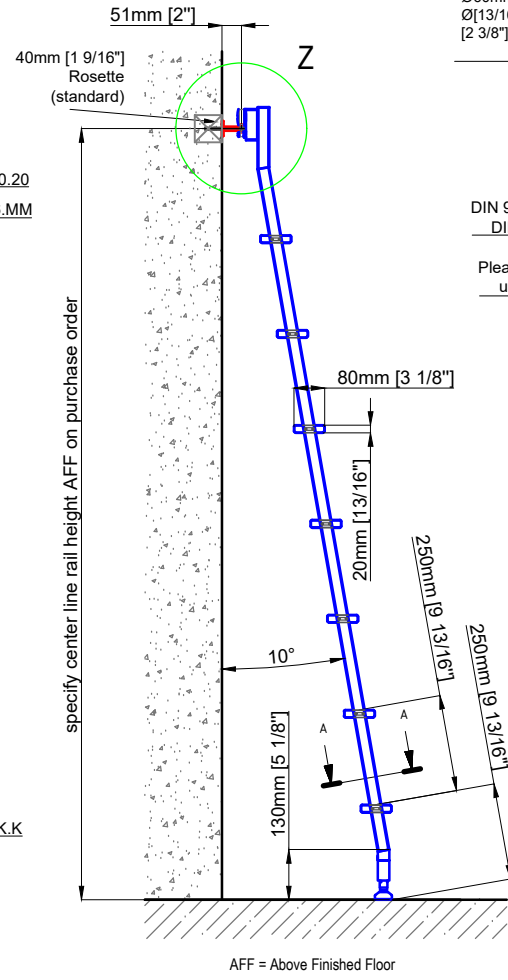
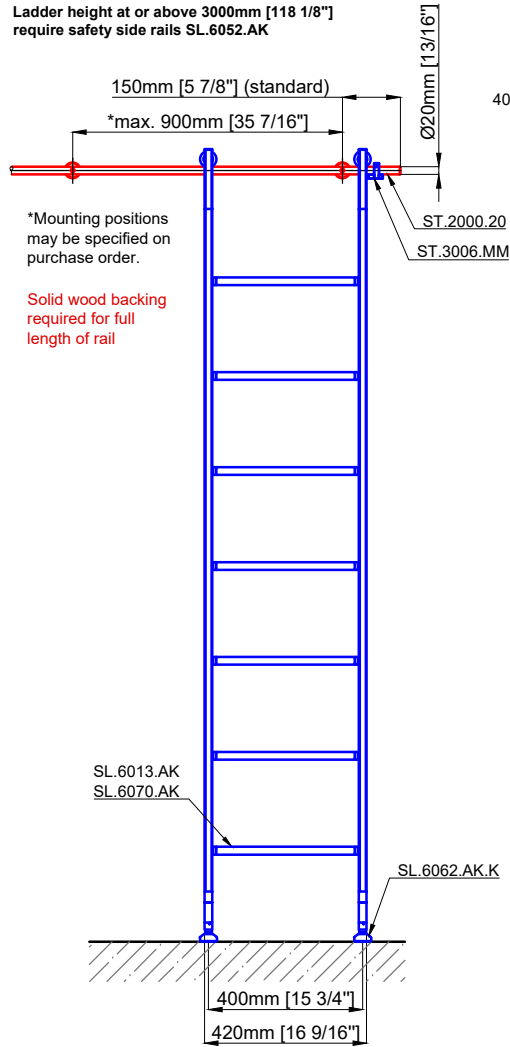
## SL.6002.AK

Date Prepared: March 2024

Prepared By: AB

Technical drawings are subject to change without notice.  
 All millimeter dimensions are exact and supersede inch conversions.

Copyright MWE NA Inc., all rights reserved. Reproduction or other use of these designs without written consent from MWE NA Inc. is prohibited.



# Sliding Ladder

## SL.6002.AK.E

Date Prepared: March 2024

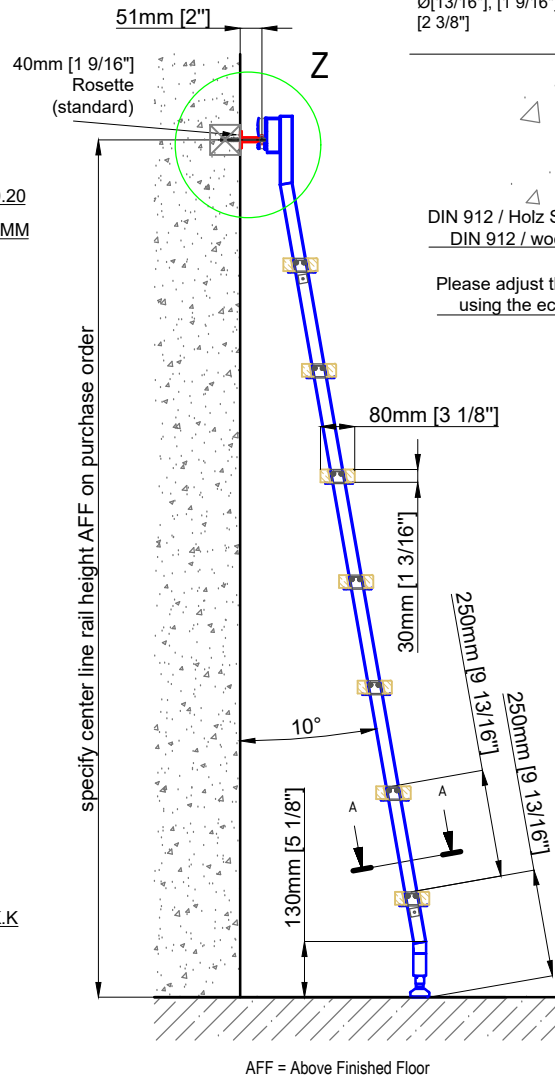
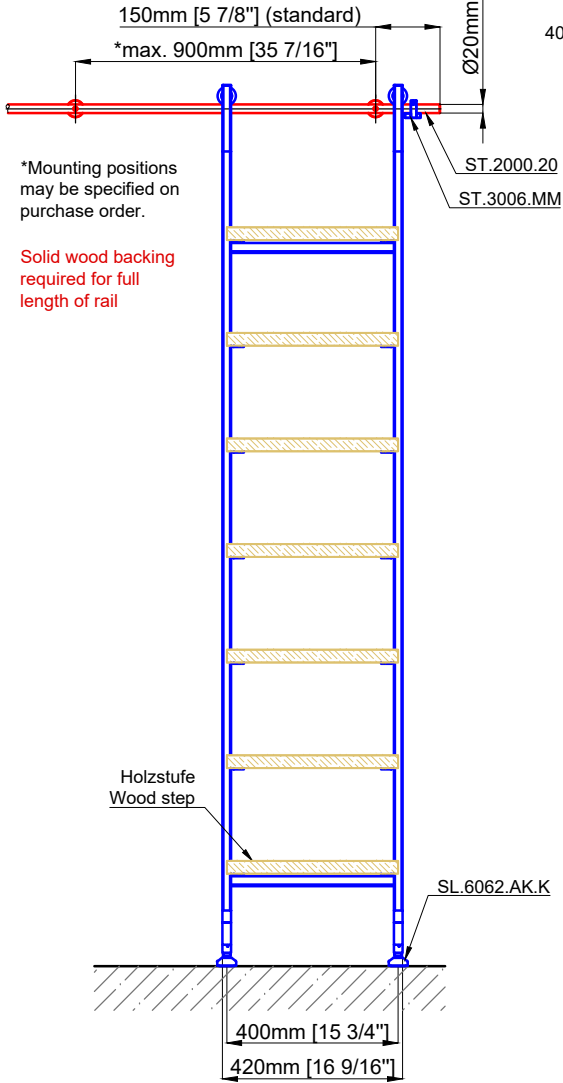
Prepared By: AB

**MWE**<sup>®</sup>  
 Stainless Steel Manufacturer  
 NORTH AMERICA  
 Email: sales@mwe-na.com  
[www.mwe-na.com](http://www.mwe-na.com)

Technical drawings are subject to change without notice.  
 All millimeter dimensions are exact and supersede inch conversions.

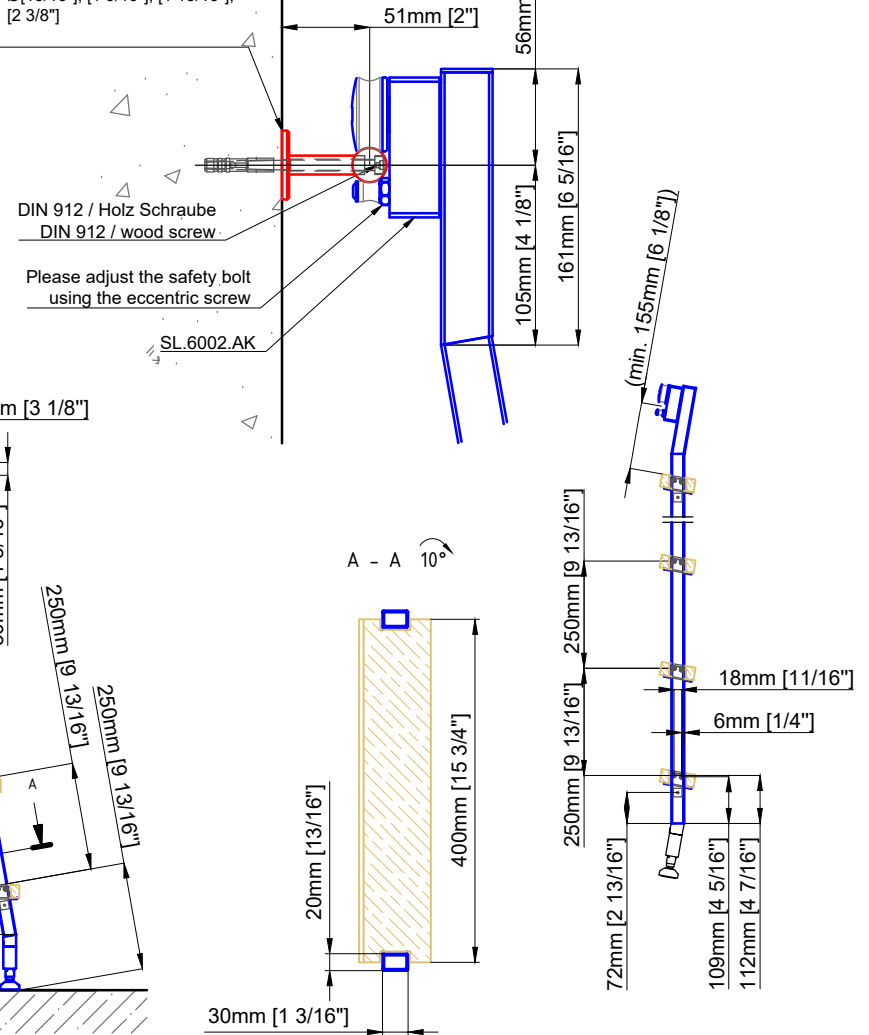
Copyright MWE NA Inc., all rights reserved. Reproduction or other use of these designs without written consent from MWE NA Inc. is prohibited.

Ladder height at or above 3000mm [118 1/8"]  
 require safety side rails SL.6052.AK



ST.2100.MM  
 Please specify Ø20,40,50 or Ø60mm with purchase order.  
 Ø[13/16"], [1 9/16"], [1 15/16"], [2 3/8"]

Detail Z



**Sliding Ladder**  
 SL.6002.AK.H

Date Prepared: March 2024

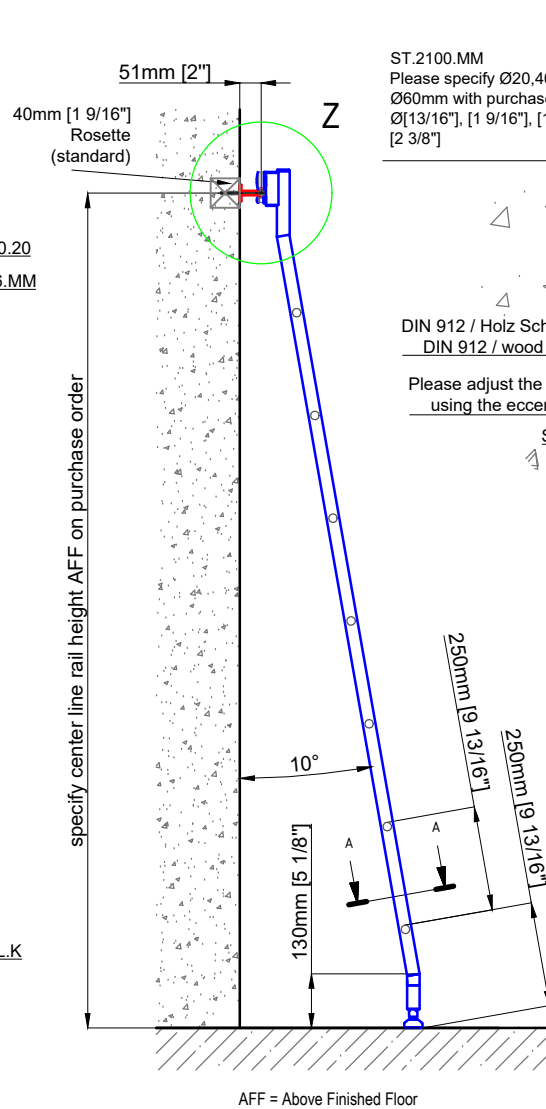
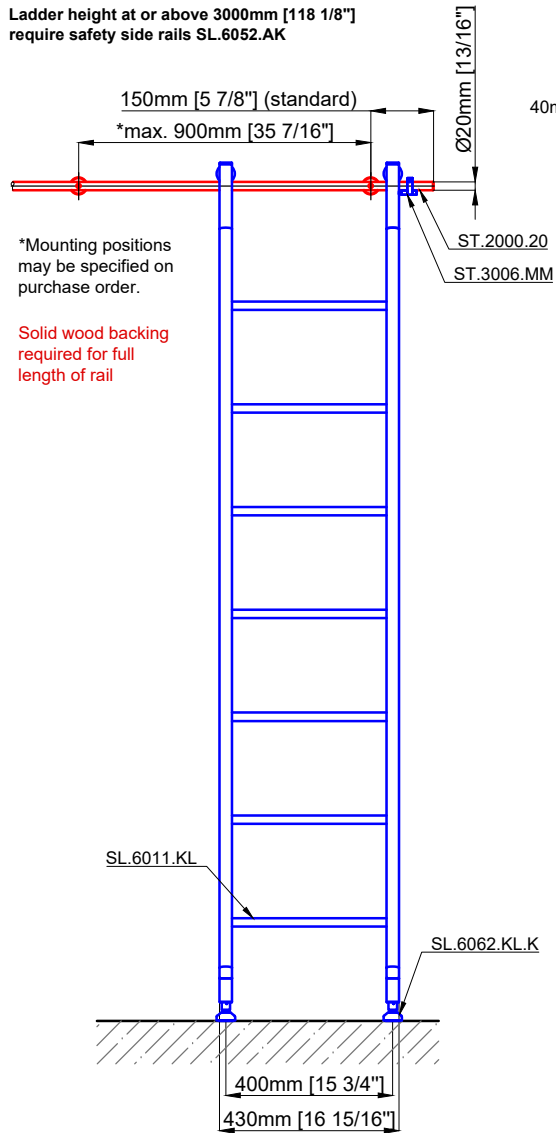
Prepared By: AB

**MWE**<sup>®</sup>  
 Stainless Steel Manufacturer  
 NORTH AMERICA  
 Email: sales@mwe-na.com  
[www.mwe-na.com](http://www.mwe-na.com)

Technical drawings are subject to change without notice.  
 All millimeter dimensions are exact and supersede inch conversions.

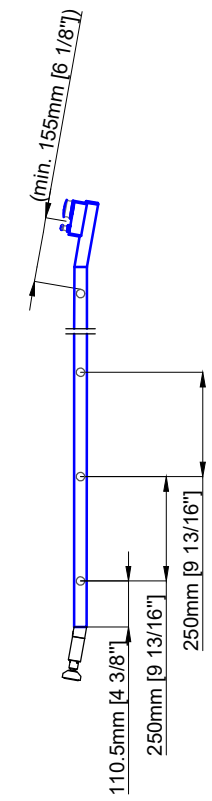
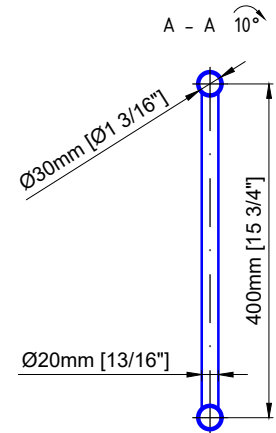
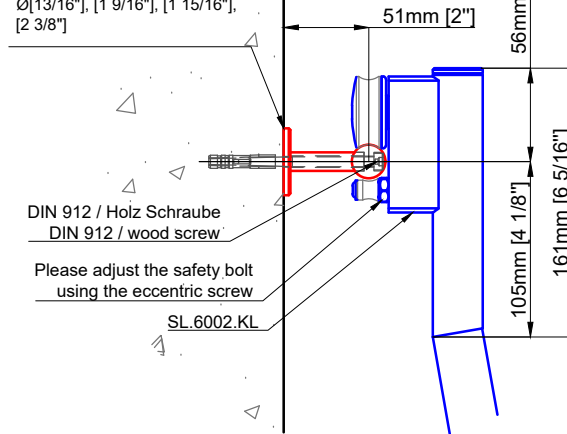
Copyright MWE NA Inc., all rights reserved. Reproduction or other use of these designs without written consent from MWE NA Inc. is prohibited.

Ladder height at or above 3000mm [118 1/8"]  
 require safety side rails SL.6052.AK



ST.2100.MM  
 Please specify Ø20,40,50 or Ø60mm with purchase order.  
 Ø[13/16"], [1 9/16"], [1 15/16"], [2 3/8"]

Detail Z



**Sliding Ladder**  
 SL.6002.KL

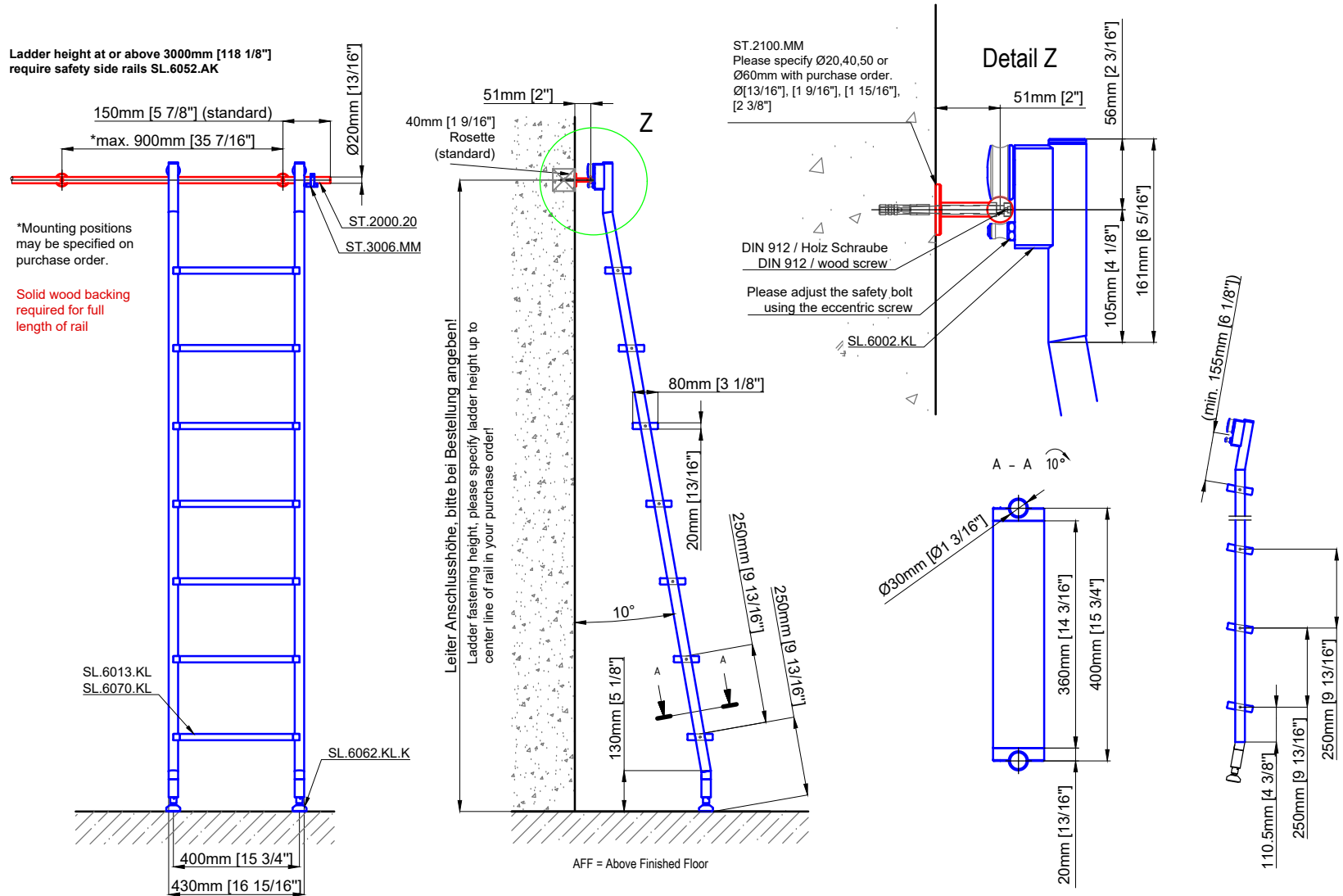
Date Prepared: March 2024

Prepared By: AB

**MWE**<sup>®</sup>  
 Stainless Steel Manufacturer  
 NORTH AMERICA  
 Email: sales@mwe-na.com  
[www.mwe-na.com](http://www.mwe-na.com)

Technical drawings are subject to change without notice.  
 All millimeter dimensions are exact and supersede inch conversions.

Copyright MWE NA Inc., all rights reserved. Reproduction or other use of these designs without written consent from MWE NA Inc. is prohibited.



# Sliding Ladder

SL.6002.KL

Date Prepared: March 2024

Prepared By: AB

