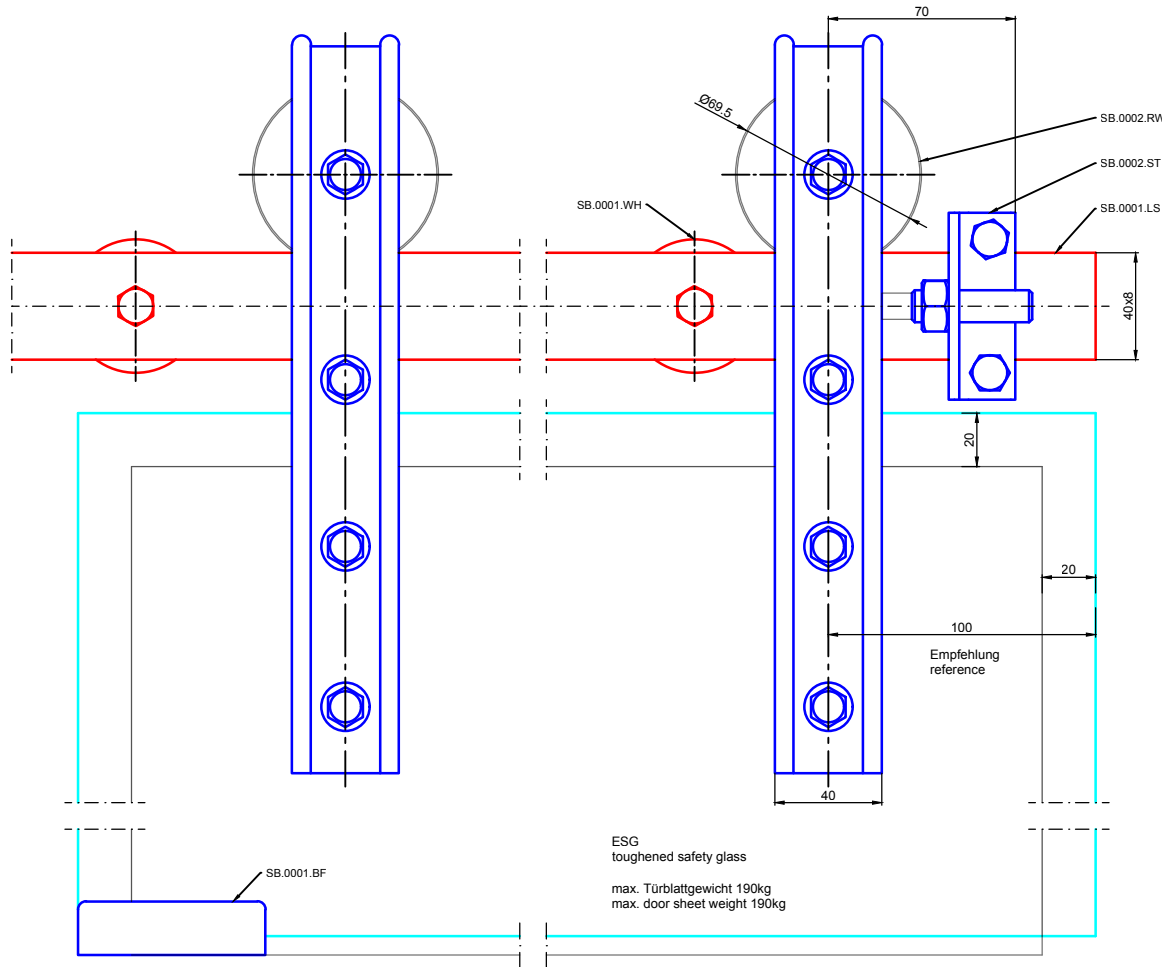


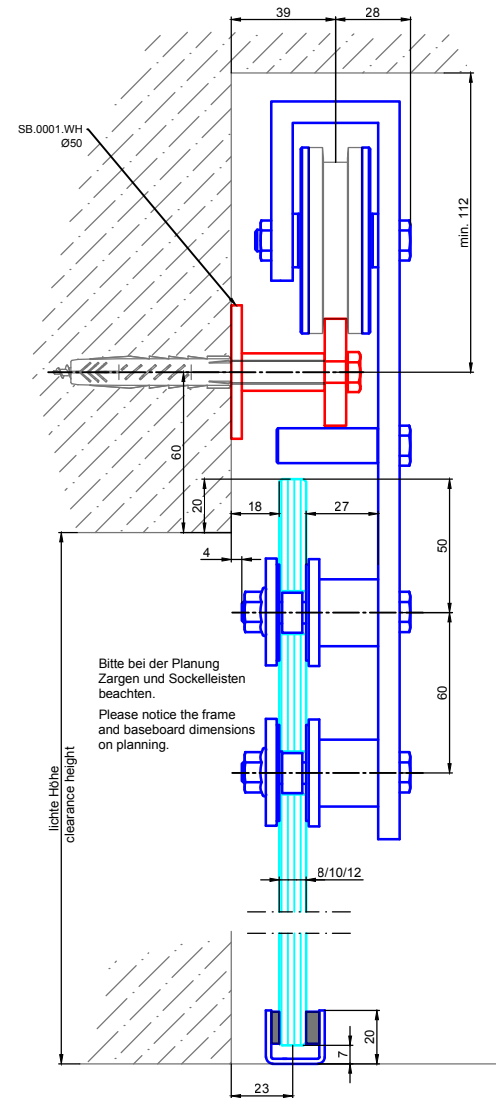
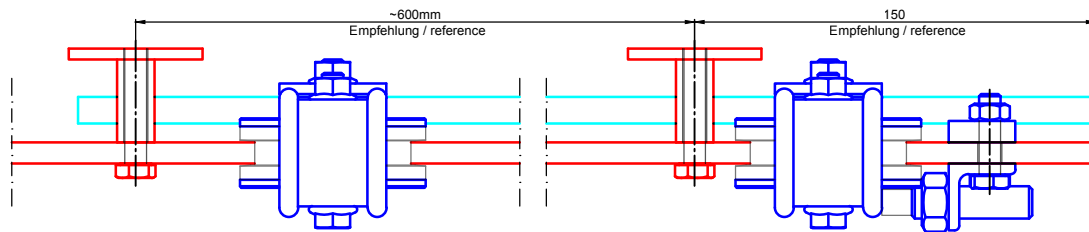
Technische Änderungen vorbehalten - subject to change without notice!

|              |  |              |           |
|--------------|--|--------------|-----------|
| Bezeichnung: | System SB.0002 (Holztür - Befestigung an Wand) |              |           |
| description: | System SB.0002 (wooden door - wall connection) |              |           |
| Modell:      | SB.0002  | CAD-Maßstab: | 1:1       |
| model:       |  | CAD-scale:   |           |
|              |  | Datum:       | 1.18.2021 |
|              |  | date:        |           |





ESG  
toughened safety glass  
max. Türblattgewicht 190kg  
max. door sheet weight 190kg



Technische Änderungen vorbehalten - subject to change without notice!

|                   |  |                            |           |
|-------------------|--|----------------------------|-----------|
| Bezeichnung:      | System SB.0002 (Glastür - Befestigung an Wand) |                            |           |
| description:      | System SB.0002 (glass door - wall connection)  |                            |           |
| Modell:<br>model: | SB.0002  | CAD-Maßstab:<br>CAD-scale: | 1:1       |
|                   |  | Datum:<br>date:            | 1.18.2021 |

