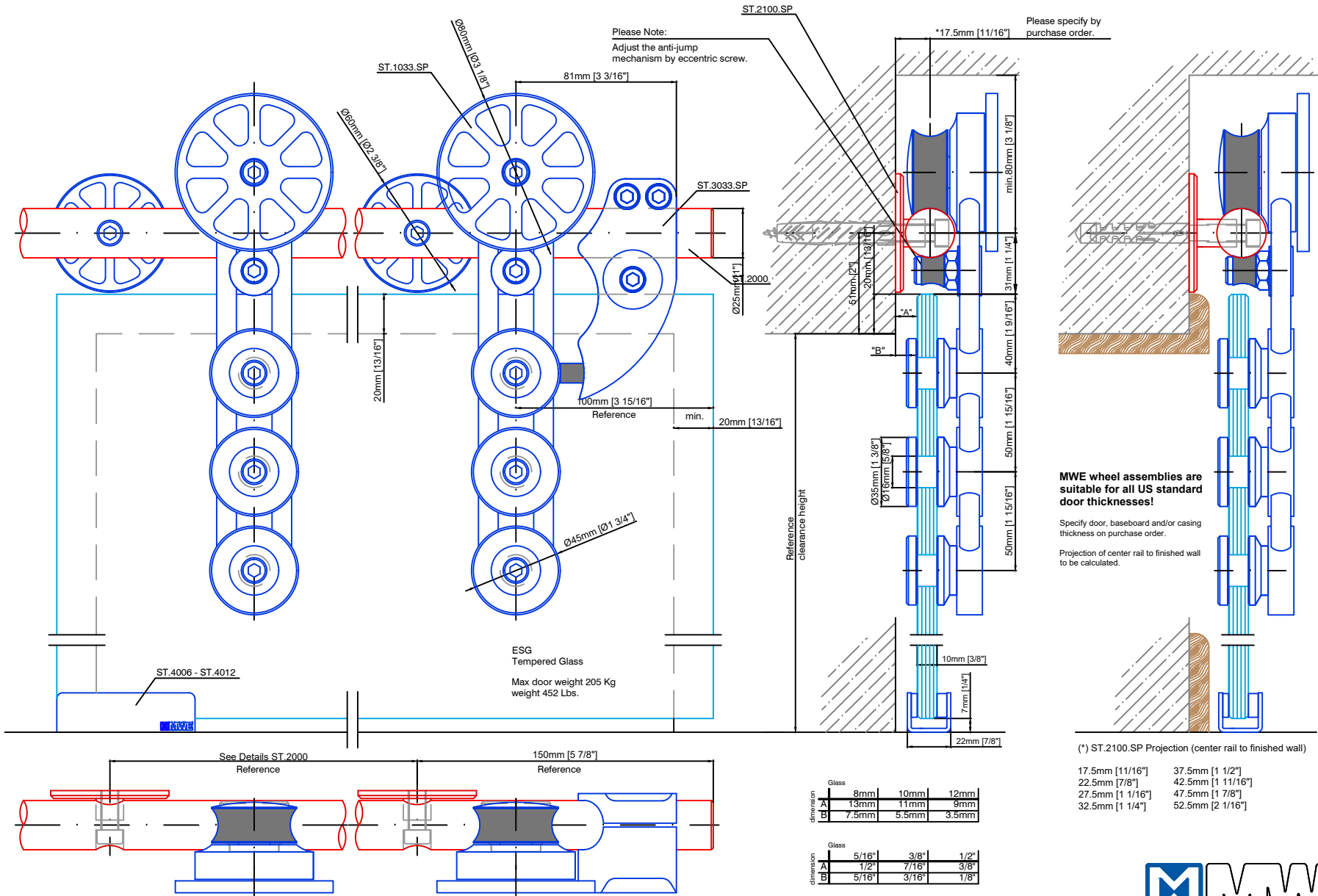


Technical drawings are subject to change without notice.  
All millimeter dimensions are exact and supersede inch conversions.

Copyright MWE NA Inc., all rights reserved. Reproduction or other use of these designs without written consent from MWE NA Inc. is prohibited.



**MWE wheel assemblies are suitable for all US standard door thicknesses!**

Specify door, baseboard and/or casing thickness on purchase order.

Projection of center rail to finished wall to be calculated.

(\*) ST.2100.SP Projection (center rail to finished wall)

17.5mm [11/16"]	37.5mm [1 1/2"]
22.5mm [7/8"]	42.5mm [1 11/16"]
27.5mm [1 1/16"]	47.5mm [1 7/8"]
32.5mm [1 1/4"]	52.5mm [2 1/16"]

# Spider ST.1033.SP

Date Prepared: July 2018

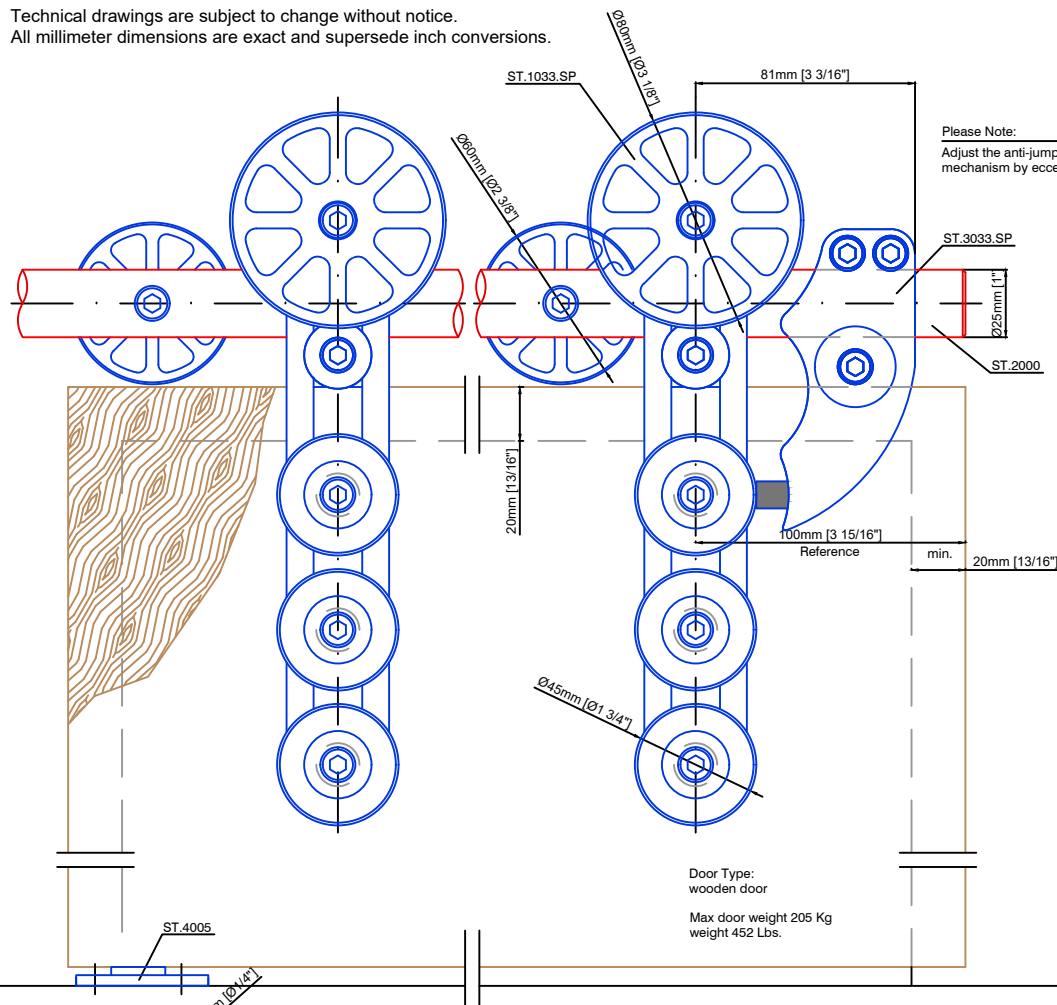
Prepared By: CDA | JRT



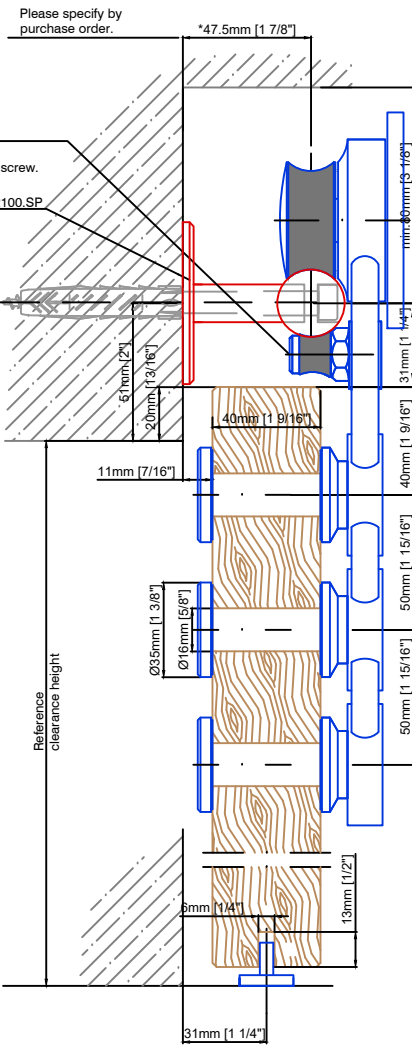
Email: [info@mwe-na.com](mailto:info@mwe-na.com)  
[www.mwe-na.com](http://www.mwe-na.com)



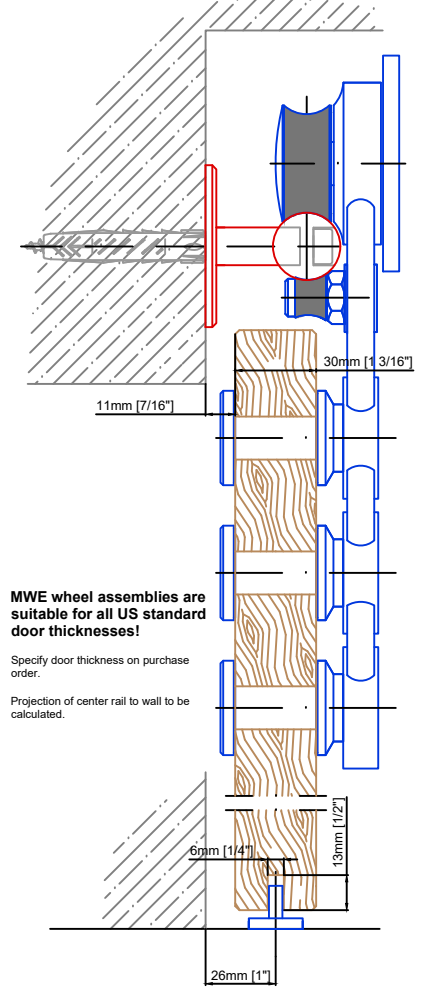
Technical drawings are subject to change without notice.  
All millimeter dimensions are exact and supersede inch conversions.



Please Note:  
Adjust the anti-jump  
mechanism by eccentric screw.

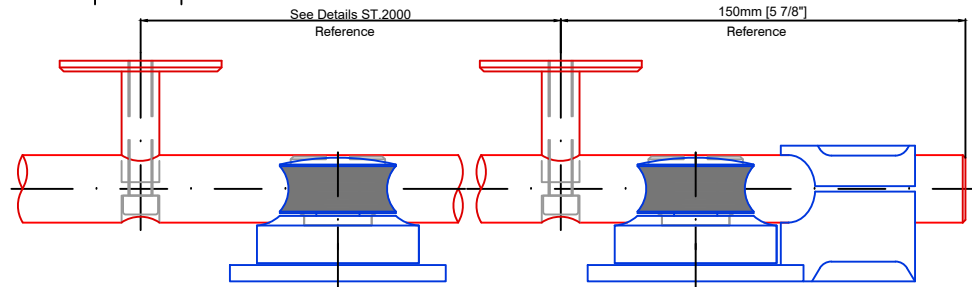
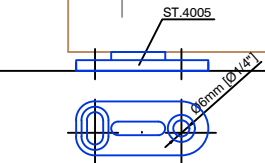


Copyright MWE NA Inc., all rights reserved. Reproduction or other use of these designs without written consent from MWE NA Inc. is prohibited.



**MWE wheel assemblies are suitable for all US standard door thicknesses!**  
Specify door thickness on purchase order.  
Projection of center rail to wall to be calculated.

Door Type:  
wooden door  
Max door weight 205 Kg  
weight 452 Lbs.



(\*) ST.2100.SP Projection (center rail to finished wall)

17.5mm [11/16"]	37.5mm [1 1/2"]
22.5mm [7/8"]	42.5mm [1 11/16"]
27.5mm [1 1/16"]	47.5mm [1 7/8"]
32.5mm [1 1/4"]	52.5mm [2 1/16"]

# Spider ST.1033.SP

Date Prepared: July 2018 | Prepared By: CDA | JRT



Email: [info@mwe-na.com](mailto:info@mwe-na.com)  
[www.mwe-na.com](http://www.mwe-na.com)